

The innovative designer cassette awning

weinor

Premium quality
Made in Germany



Zenara

Zenara LED

www.weinor.com

Relax al Fresco |

weinor



Contents

Product highlights	4	weinor hard wired solutions	
Awning fabrics	7	(local switch control)	15
Frame colours	7	weinor hard wired solutions	
Zenara LED version	8	with Somfy control	16
weinor Opti-Flow-System®	9	Accessories	17
BiConnect remote control	10	Planning/measuring	19
Somfy RTS radio technology	12	Wall connection	20
Somfy io-homecontrol®		Cross-sections	21
radio technology	14	Installation options	22
		Extraction forces	26

weinor Zenara –
awning design at it's beautiful best



The avantgarde shape of the weinor Zenara makes it the designer awning among all awnings and shades. On modern houses, this cassette awning engages in harmonious dialogue with the facade, while on older buildings it provides a tantalising contrast. Since even the larger-sized versions measuring up to 6.5 m in width need just two wall connections, the weinor Zenara merges beautifully with the house to form a single whole. With its numerous innovations, the Zenara is also a true avantgardist in engineering terms.

weinor Zenara highlights



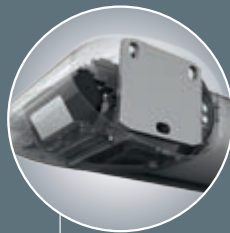
47 frame colours
and 9 trend colours



10-year warranty on
LongLife arm



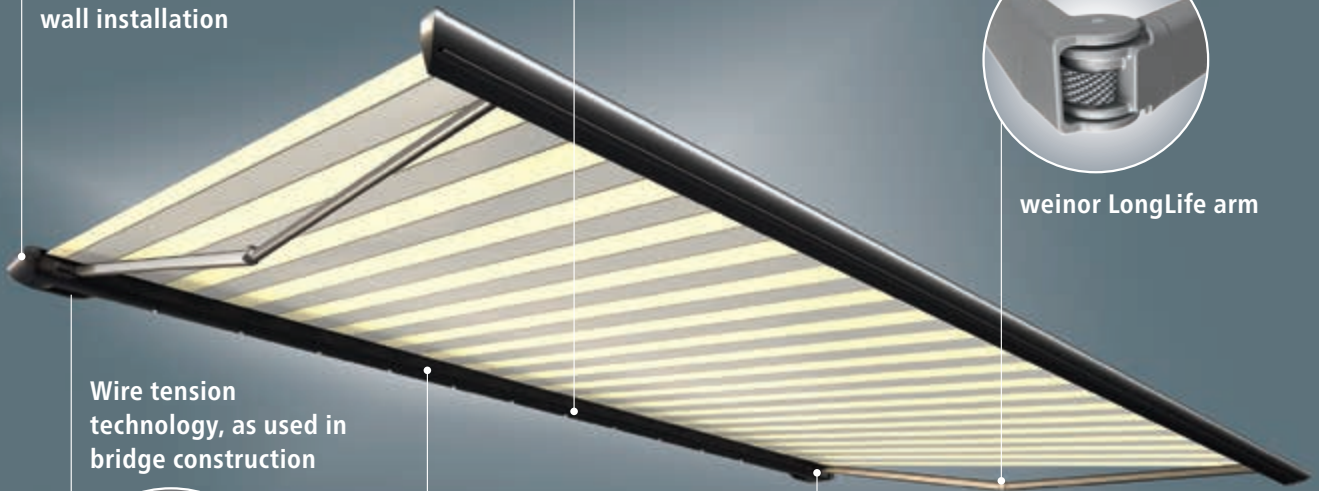
Innovative
wall installation



Fully concealed
technology



weinor LongLife arm

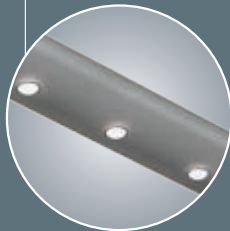


Wire tension
technology, as used in
bridge construction

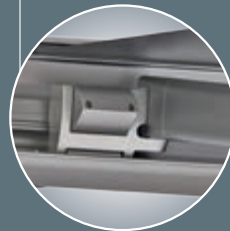


Variety of options
for every need

Zenara and
Zenara LED p. 10



Ingenious tilting wind
lock mechanism



Product benefits in detail

Technology and design at its best: the highlights of the weinor Zenara



Innovative wall installation – for a new, purist design

The innovative, patent-pending technology housed in the weinor Zenara forms the backbone to its architectural shape:

- available up to a width of 6.5 m with just two installation brackets
- new, purist look
- sturdy housing means less profile sag
- widths from 5.5 m supplied with wire tensioning technology as used in suspension bridge construction



Completely concealed technology – for a seamless look

All of the technical components are concealed in the housing to save space. The advantage:

- no visible brackets, fixings or cover caps

The user-friendly inspection flap makes for

- ready access to the BiConnect components
- easy maintenance of the electronic parts



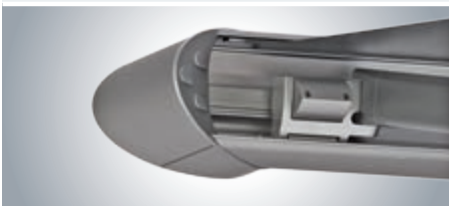
weinor LongLife Arm – durable, quiet operation

The new arm features an exceptionally robust high-tech belt.

- tested to more than 100,000 cycles
- extremely quiet operation
- no maintenance required

• die-forged aluminium in joint – light but highly robust

- excellent fabric positioning
- 10-year warranty



Ingenious wind lock tilting mechanism – for precise adjustment

weinor's tilting mechanism technology ensures the cassette closes very precisely.

- perfect spacing of fabric to arm

• awning can be set between 5° and 40° pitch

- wind lock safety device
- mechanical parts elegantly concealed



Wire tensioning technology, as used in bridge construction – only two fixings required

Unlike conventional awnings, the Zenara only needs to be connected to the wall at two points, even the larger models.

- only two installation points
- same applies to larger models, e.g. 5.5 m and above. The innovative wire tensioning technology used in bridge construction makes this possible



- standard
- optional
- unavailable

weinor Zenara versions

	Zenara	Zenara LED
Technology		
Max. width	650 cm*	650 cm*
Max. projection	400 cm	400 cm
Housing size (W x H)	251 x 160 mm	251 x 165 mm
Coupled systems	—	—
Motor drive	● as standard; no crank	● as standard; no crank
Awning pitch	5° to 40°	5° to 40°
Installation options	can be installed on walls, ceilings and rafters	
LED lighting (separate spotlights)	—	● integrated into the awning's cassette
Design		
47 standard frame colours	●	●
Over 150 other RAL colours	○	○
9 trend colours	●	●
Other textured colours	○	○
weinor fabric collection	●	●
Accessories		
Tempura heating system	○ fastener with universal bracket	
Controls		
Remote control	○ see weinor/Somfy remote control, see p. 12	
No remote	● see weinor hard wired solutions, from p. 17	
Weather sensors		
Sun sensor	○ see weinor/Somfy weather sensors, from p. 13	
Sun-Wind sensor	○ see weinor/Somfy weather sensors, from p. 13	

* from a width of 451 cm, a rain drain is used in the middle of the projection profile



Fabrics – attractive, brilliant long-lasting colours

For an attractive awning you need a high-quality fabric. The 'colours by weinor®' collections provide a wide selection.

- solution-dyed to make them colour-fast
- stay beautiful thanks to dirt- and water-repellant nano-coating
- optional: wide range of collections by other manufacturers



Acrylic fabrics
100 patterns



Polyester fabrics
55 patterns

- high-quality acrylic
- proven for decades
- fabric width: 120 cm/240 cm

- innovative polyester quality
- high-stretch with memory effect®
- fabric width: 120 cm



Wide range of frame colours – abundance of choices

weinor coats all of its products in its own workshop. This ensures that they have the best-possible colour tonality and identical gloss levels.

- 47 standard RAL frame colours, silk gloss (gloss level $70 \pm 5\%$ when measured at a 60° angle)
- 9 scratchproof, resistant trend colours with a textured look
- over 150 special RAL colours

47 standard frame colours

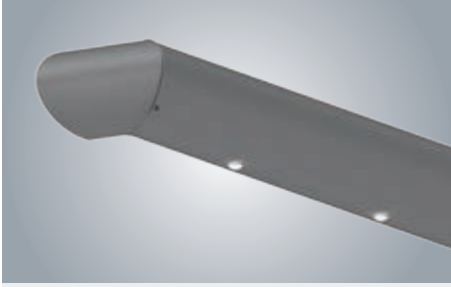
RAL 1002 Sandy yellow	RAL 1003 Signal yellow	RAL 1014 Ivory	RAL 1015 Light ivory	RAL 1023 Traffic yellow	RAL 1034 Pastel yellow	RAL 2000 Yellow orange	RAL 2002 Vermilion	RAL 2011 Deep orange
RAL 3002 Carmine red	RAL 3004 Magenta red	RAL 3007 Black red	RAL 4005 Blue lilac	RAL 4006 Traffic purple	RAL 5005 Signal blue	RAL 5009 Azure blue	RAL 5014 Pigeon blue	RAL 5021 Water blue
RAL 5022 Night blue	RAL 5024 Pastel blue	RAL 6005 Moss green	RAL 6009 Fir green	RAL 6011 Reseda green	RAL 6012 Black green	RAL 7015 Slate grey	RAL 7016 Anthracite grey	RAL 7021 Black grey
RAL 7030 Stone grey	RAL 7032 Pebble grey	RAL 7035 Light grey	RAL 7039 Quartz grey	RAL 7040 Window grey	weinor 7319 weinor grey	RAL 8001 Ochre brown	RAL 8003 Clay brown	RAL 8014 Sepia brown
RAL 8016 Mahogany brown	RAL 8017 Chocolate brown	RAL 8019 Grey brown	RAL 8022 Black brown	weinor 8077 weinor dark brown	RAL 9001 Cream	RAL 9005 Jet black	RAL 9006 White aluminium	RAL 9007 Grey aluminium
RAL 9010 Pure white	RAL 9016 Traffic white							

9 trend colours

WT 29/10797 Approx. RAL 9010	WT 29/50704 Approx. RAL 6009 metallic	WT 29/60740 Chestnut 04 metallic	WT 29/70786 Sparkling iron effect	WT 29/71289 Approx. RAL 7016	WT 29/80077 Approx. DB 703 metallic	WT 29/80081 Iron glimmer effect P7	WT 29/90146 Approx. RAL 9006 metallic	WT 29/90147 Approx. RAL 9007 metallic

weinor is an eco-friendly company. To ensure compliance with high environmental standards, manufacturing processes and materials undergo regular testing by experts.

As a result of the ban on the use of heavy metals in powder coatings, paint manufacturers can no longer guarantee colour stability despite making every effort to do so. It therefore cannot be excluded that colours in general, and Fire Red (RAL 3000) in particular, may fade with time. For technical reasons, the colours may appear significantly different when printed.



LED lighting – 30,000 hours of lighting require minimal energy consumption

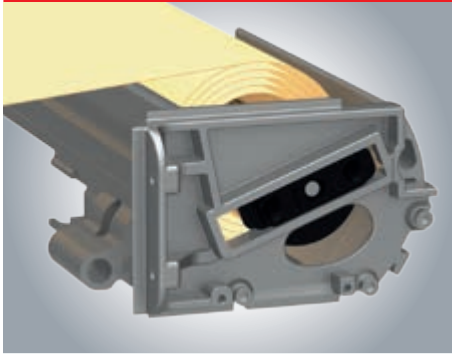
The select LED components are patent-pending and represent the very best in weinor quality:

- integrated into the cassette
- atmospheric light thanks to special glass lenses
- lighting remains on even when awning is retracted
- extremely energy-efficient
- lifetime of 30,000 hours
- dim to any level with the BiConnect remote control
- easy to service: simply replace individual LED lights without un-installing the awning

Awning width	Number of separate LED spotlights
228 – 250 cm	3
251 – 300 cm	4
301 – 350 cm	5
351 – 400 cm	6
401 – 450 cm	7

Awning width	Number of separate LED spotlights
451 – 500 cm	8
501 – 550 cm	9
551 – 600 cm	10
601 – 650 cm	11





Patented weinor Opti-Flow-System®

to keep fabric perfectly positioned on the awning roller and the Valance Plus roller

The patented weinor Opti-Flow-System® ensures that the front rail closes reliably, even when the fabric is wide and the fabric roller is small.

Conventional holder

In this case, the fabric roller is not supported from side to side.

The result:

- the fabric is not ideally positioned
- dirt gathers on the fabric over time due to the central position of the support

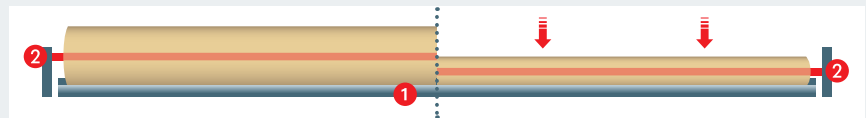
weinor Opti-Flow-System®

Here, the fabric roller rests unattached on the glide profile: the entire width of the fabric is supported and cannot sag.

The advantage:

- the fabric positioning is ideal even for wide fabrics
- specially coated glide profile means the fabric enjoys long-term protection

Advantages of the fabric roller support



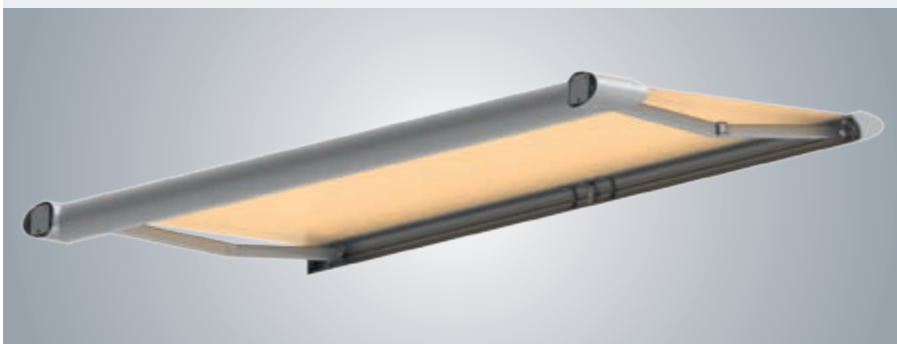
Fabric roller is unrolled: the glide profile (1) supports the fabric roller along its entire length and thus effectively prevents sagging.

Fabric roller is rolled up: the fabric roller steadily rolls into its holder (2). The glide profile continues to provide support along its entire length.



The integrated rain drainage

- will make sure rainwater will be guided off through the front profile
- will be used from width of 451 cm or more. Will be placed centered in the front profile





BiEasy 1M

BiEasy 5M

weinor BiConnect – coordinated control for awning, light and heating

The awning weinor Zenara comes as standard with one motor and can optionally be controlled with the pre-programmed BiEasy remote control.

There are handheld transmitters with different numbers of channels: choose from 1, 5 or 15 channels with a display.



BiEasy 15M with display

BiEasy App



weinor BiEasy hand transmitter

- operationally safe thanks to protected transmission frequency (868 MHz)
- attractive and convenient design

BiRec Remote receiver

- various remote-controlled receivers depending on function combinations
- to suit awning fittings – e.g. to extend and retract the awning or dim the lights

Sun and Sun-Wind sensors – automatic heat and product protection (option)

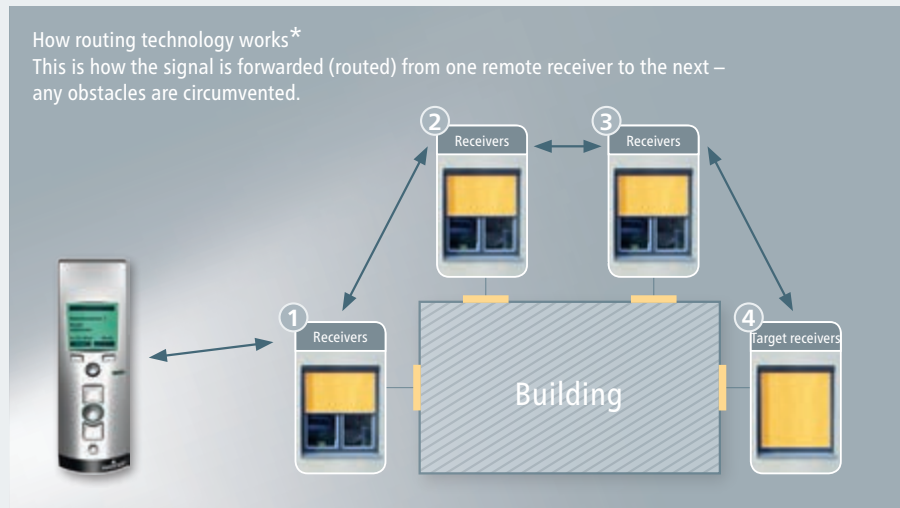
The BiConnect series remote sensors automatically extend the awning when the sun shines and reliably retract it in case of wind or cloud.

BiEasy APP

Please see technical brochure "Accessories" for further information.

State-of-the-art routing technology:

The new BiConnect radio control transmits bidirectional signals and is very reliable thanks to its ultra-modern routing technology. In this case, the BiEasy handheld transmitter sends a radio signal to an active receiver within its range. The signal is then forwarded from one receiver to the next until it reaches the target receiver – and all this occurs in a matter of seconds.



* Very simplified illustration

↔ = Routing signal and feedback signal



Installation location for receiver, power supply pack and further electrical components

The BiConnect receiver is accommodated in the cassette. The faceplate can be easily be opened for servicing purposes. The receiver is then easily accessible.

BiRec receiver



BiRec MA-K
Eemote receiver for motor control



BiRec MLED
Integrated remote receiver for motor and LED control

Product protection sensor BiSens Agido-3V



BiSens Agido-3V
Retracts awning when vibrations and movement are detected. Battery supply (2 x 1.5 V; type AAA), no wiring.

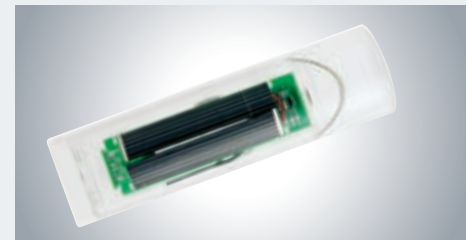
BiSens Sensoren



BiSens SW-230 V
Sun, wind sensor with power connection



BiSens SW-Solar
Sun and wind sensor with solar operation (not suitable for units used as privacy protection)



BiSens SUN-Solar
Sun sensor solar operation

Product	Comes with (integrated)			Remote receiver	Handheld transmitter
weinor Zenara	awning motor			BiRec MA-K	BiEasy 1M/1MW-3V
	awning motor		Tempura heating system (option)	BiRec MA-K; BiRec HD	BiEasy 5M/15M/App
weinor Zenara LED	awning motor	LED Design light bar		BiRec MLED	BiEasy 5M/15M/App
	awning motor	LED Design light bar	Tempura heating system (option)	BiRec MLED; BiRec HD	BiEasy 5M/15M/App

Product	BiConnect
weinor Zenara operation	receiver integrated into cassette
LED Design light bar	dimnable, combi-receiver for main operation and LED with integrated power supply pack, accommodation in cassette
Tempura heating system	<ul style="list-style-type: none"> • dimmable, additional receiver required • accommodation of the receiver in the design bar provided for this purpose (see page 19)



Telis 1
RTS Pure

Telis 4
RTS Pure

Telis Soliris
RTS Pure

Telis 4 Soliris
RTS Pure

Somfy RTS

Alternatively, the weinor Livona can also be controlled with Somfy RTS.

Somfy RTS

Since RTS works unidirectionally, no feedback is given on the status of the units. The radio control system runs on a frequency of 433.42 MHz.

Wall transmitter:



Smoove 1 RTS
Pure Shine

Chronis RTS smart

Somfy RTS remote control

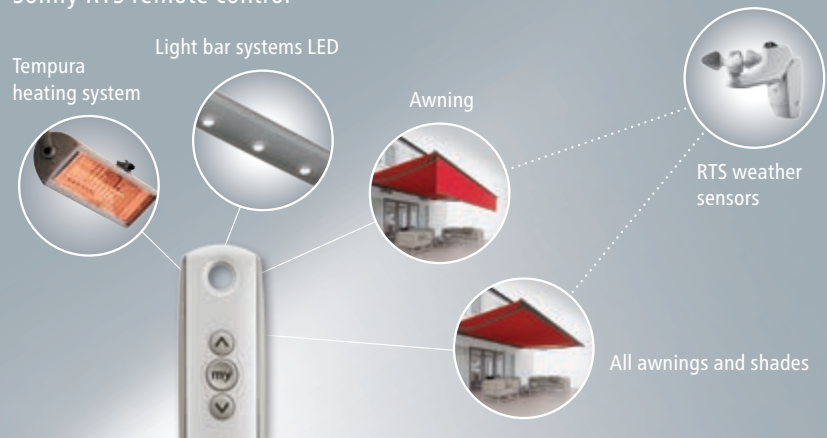
Tempura heating system

Light bar systems LED

Awning

RTS weather sensors

All awnings and shades





Installation location Somfy RTS receiver

The Somfy RTS receiver is accommodated in the cassette and therefore easily replaced in case of service (see p. 13).

Somfy RTS Receiver (for LED)



Lighting Slim Receiver RTS
Remote receiver for LED control

Somfy RTS Sensor



Soliris Sensor RTS
Radio wind and sun sensor with power connection

Product	Comes with (integrated)			Remote receiver	Handheld transmitter
weinor Zenara	awning motor			integrated in remote-controlled motor	Telis 1 RTS Pure/Telis 1 Soliris RTS Pure/Smooove 1
	awning motor		Tempura heating system (option)	heating Slim Receiver RTS Plug	Telis 4 RTS Pure/Telis 4 Soliris RTS Pure
weinor Zenara LED	awning motor	LED Design light bar		lighting Slim Receiver RTS	Telis 4 RTS Pure/Telis 4 Soliris RTS Pure
	awning motor	LED Design light bar	Tempura heating system (option)	lighting Slim Receiver RTS; heating Slim Receiver RTS Plug	Telis 4 RTS Pure/Telis 4 Soliris RTS Pure

Product	Somfy RTS
weinor Zenara operation	receiver integrated into RTS remote control motor
LED Design light bar	<ul style="list-style-type: none"> • not dimmable • additional receiver external lighting Slim receiver RTS (with downstream power supply pack) • integrated in the cassette
Tempura heating system	<ul style="list-style-type: none"> • not dimmable, additional receiver required

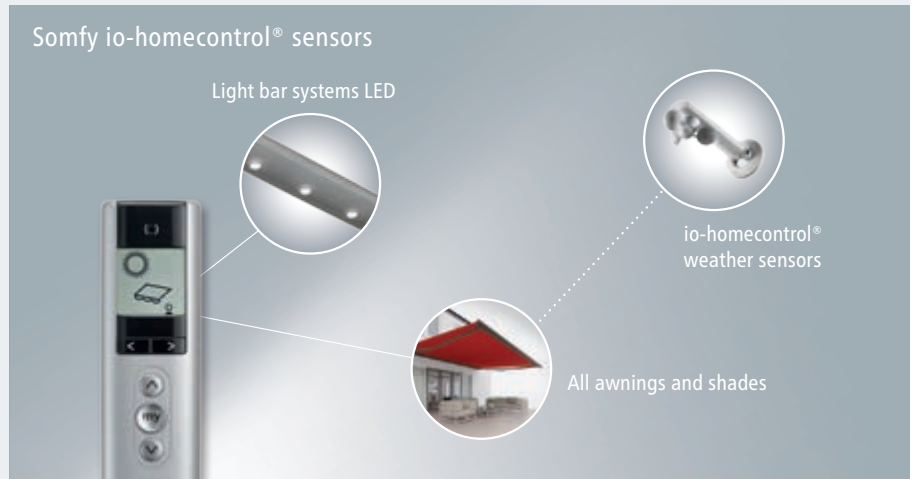


Situo Mobile io Silver Mat Easy Sun io Silver Mat Smoove 1 io Pure Shine

Somfy io-homecontrol®

io-homecontrol® allows every convenience and security feature to be combined into one network and be controlled using a single remote

transmitter. The expandable system can also incorporate any new products that are added.



Somfy io-homecontrol® sensors



Sunis WireFree io Radio sun sensor Sensor Box io Communication unit

Somfy io-homecontrol® receiver



Lighting receiver on/off io

Installation location Somfy Lighting Receiver io

The Somfy receiver is accommodated in the cassette and therefore easily replaced in case of service (see p. 13).

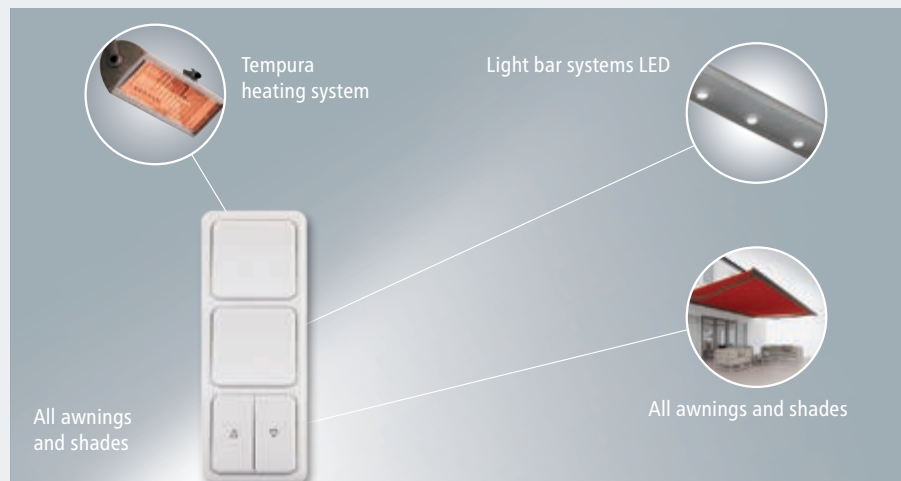
Product	Comes with (integrated)		Remote receiver	Handheld transmitter
weinor Zenara	awning motor		integrated in remote-controlled motor	Situo Mobile io Silver Mat/Smoove 1 io Pure Shine
weinor Zenara LED	awning motor	LED Design light bar	lighting Receiver io	Easy Sun io Silver Mat

Product	Somfy io-homecontrol®
weinor Zenara operation	Empfänger integriert im io-Funkmotor
LED Design light bar	<ul style="list-style-type: none"> • not dimmable • additional receiver external lighting receiver io (with downstream power supply pack) • accommodation in the cassette
Tempura heating system	unavailable



Hard wired

A hard wired control makes sense in the case of existing power cables or sources of interference for radio control.



Product	weinor hard wired (commutator/local switch control)
weinor Zenara operation	<ul style="list-style-type: none"> • no receiver required • local switch control
LED Design light bar	<ul style="list-style-type: none"> • not dimmable • local switch control
Tempura heating system	<ul style="list-style-type: none"> • not dimmable • local switch control

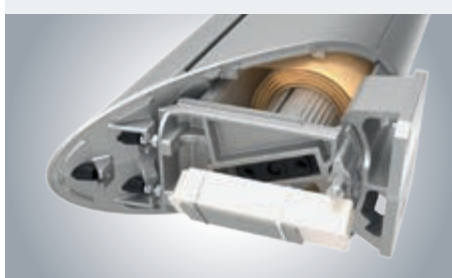


Power supply pack for option LED

Power supply pack for option LED (hard wired)

The power supply pack provides the voltage and current intensity required to operate the LED. It is only necessary for the LED option.

Power supply pack position	Product
in the cassette	weinor Zenara LED
no power supply pack required	weinor Zenara



Einbauort Netzteil für Option LED
Das Netzteil wird leicht zugänglich in der Kassette platziert. Beim Motor ohne Option LED wird der Einbauort nicht benötigt und bleibt leer.

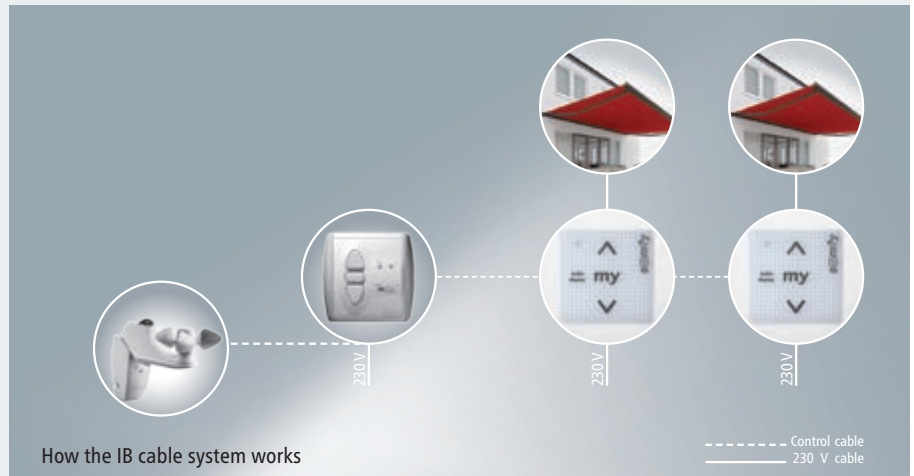
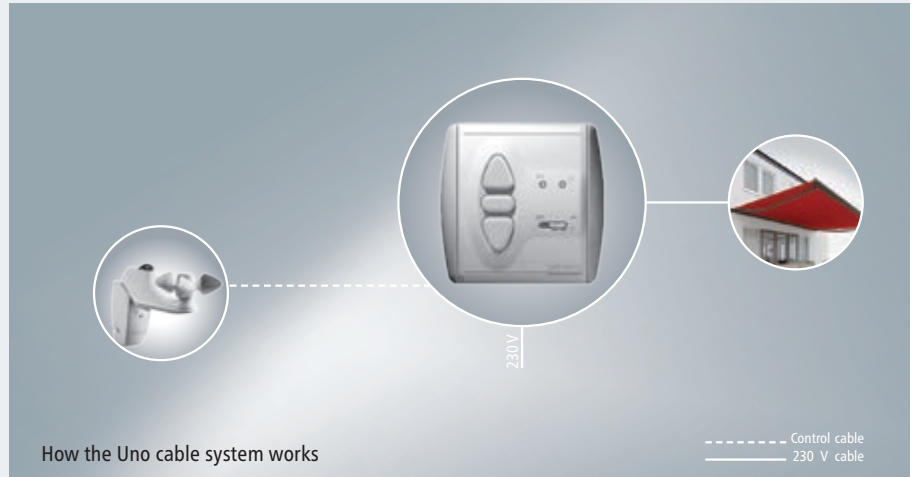


Steuergerät +
Sensor Uno/IB

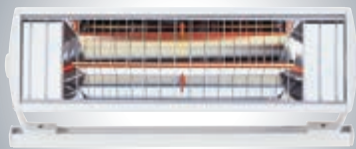


Smoove Uno IB +
Pure Shine

For the hard wired version, a Somfy switch and sun/wind sensor can be supplied with the awning.



Product	weinor firmly wired with Somfy control
weinor Zenara operation	no receiver required
LED Design light bar	<ul style="list-style-type: none"> • not dimmable • accommodation of the power supply pack in the cassette • local switch control
Tempura heating system	<ul style="list-style-type: none"> • not dimmable • local switch control



Tempura Universal heating system, high-performance level (optional)

The energy-efficient Tempura infrared heating system has an impressive heating capacity of over 1,500 watt in a tiny housing.

- instant heat: no warm-up time
- turn as required for targeted warmth
- operate and dim using BiConnect remote control
- splash protection
- comes in 47 standard frame colours plus 9 scratchproof, resistant trend colours with a smart, textured look
- option: 150 special RAL colours
- universal bracket makes it easy to retrofit
- TÜV tested



Design bar for Tempura heating system receiver

Recommendation: Provide BiRec HD (bidirectional heating dimmer) or Somfy heating receiver Heating Slim Receiver RTS Plug with additional

protection using the horizontally mounted designer bar

Simplified view from rear



BiRec HD
Remote receiver for heating control



Heating Slim Receiver Somfy RTS Plug
Remote receiver for heating control





Determining the projection and clearance height:

1. Find the projection by looking in the 'Projection' table for the patio depth.
2. Using the projection from the table and the required pitch, consult the 'clearance height' table for the clearance height. This clearance height refers to an installation height of 300 cm.
3. Add/subtract the difference between 300 cm and the actual mounting height to/from the clearance height in the table.

Determining the projection

This table can be used to find the awning projection for any given horizontal patio depth.

Pitch	Patio depth in cm					
	150	200	250	300	350	400
5°	151	201	251	301	351	402
15°	155	207	259	311	362	414
25°	166	221	276	331	386	441

Projection in cm (rounded figures)

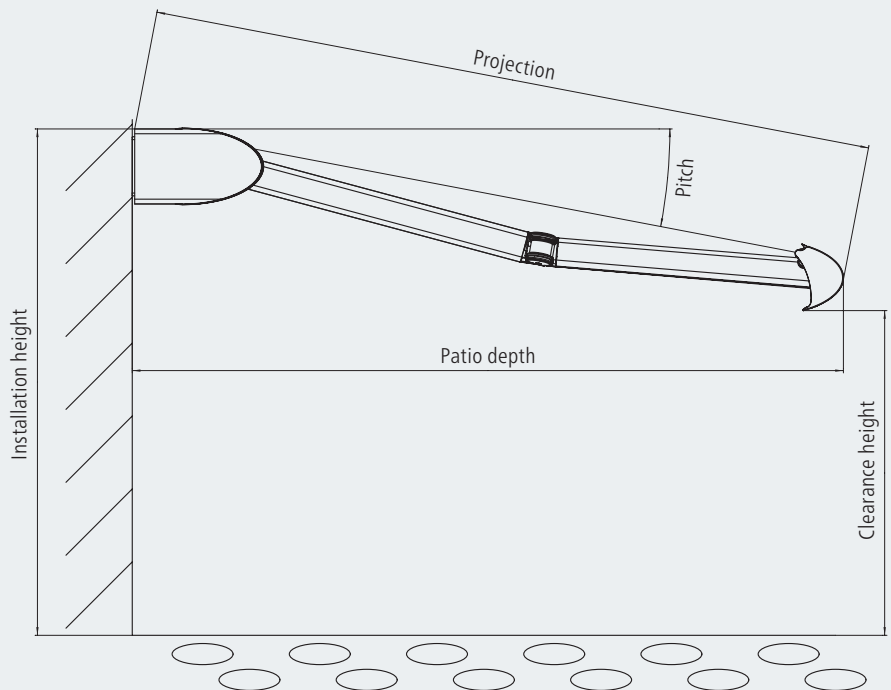
Determining the clearance height

This table is used to find the clearance heights for various projections when the tilt angle is 5°, 15° or 25°.

This table is based on the example of an installation height of 300 cm (upper edge of awning).

Pitch	Projection in cm					
	150	200	250	300	350	400
5°	274	270	265	261	257	252
15°	248	235	223	210	197	184
25°	224	203	182	160	139	118

Clearance height in cm (rounded figures)





This is why the Zenara only needs two brackets

The weight and wind load of the awning is conveyed as a tensile load from each of the two folding arms to the bracket located closest to the respective arm. The larger the bracket and the more suitable the fixings that are used, the better this load can be spread. Certain conditions need to be considered, however: when determining how far apart the fixings should be spaced, it is important to take the installation surface into account and e.g. the gouge caused by the fixings (see manufacturer's table).

Sizes and bracket recommendations

Width in cm	Number of arms	Projection in cm (irregular figures possible)					
		150	200	250	300	350	400
228 – 250	2	●					
251 – 300	2	●	●				
301 – 350	2	●	●	●			
351 – 400	2	●	●	●	●		
401 – 450	2	●	●	●	●	●	
451 – 500	2	●	●	●	●	●	●
501 – 550	2	●	●	●	●	●	●
551 – 600	2	●	●	●	●	●	●
601 – 650	2	●	●	●	●	●	●

- Zenara standard wall bracket
- mounting plate, 405 x 144 mm, incl. 1 standard wall bracket and covers

Wall mounting on C20/25 concrete with up to 200 mm of facing, wind resistance class 2 and a permissible centric tensile load of 5.71 kN for anchor bolts



Innovative wire tensioning technology, as used in bridge construction

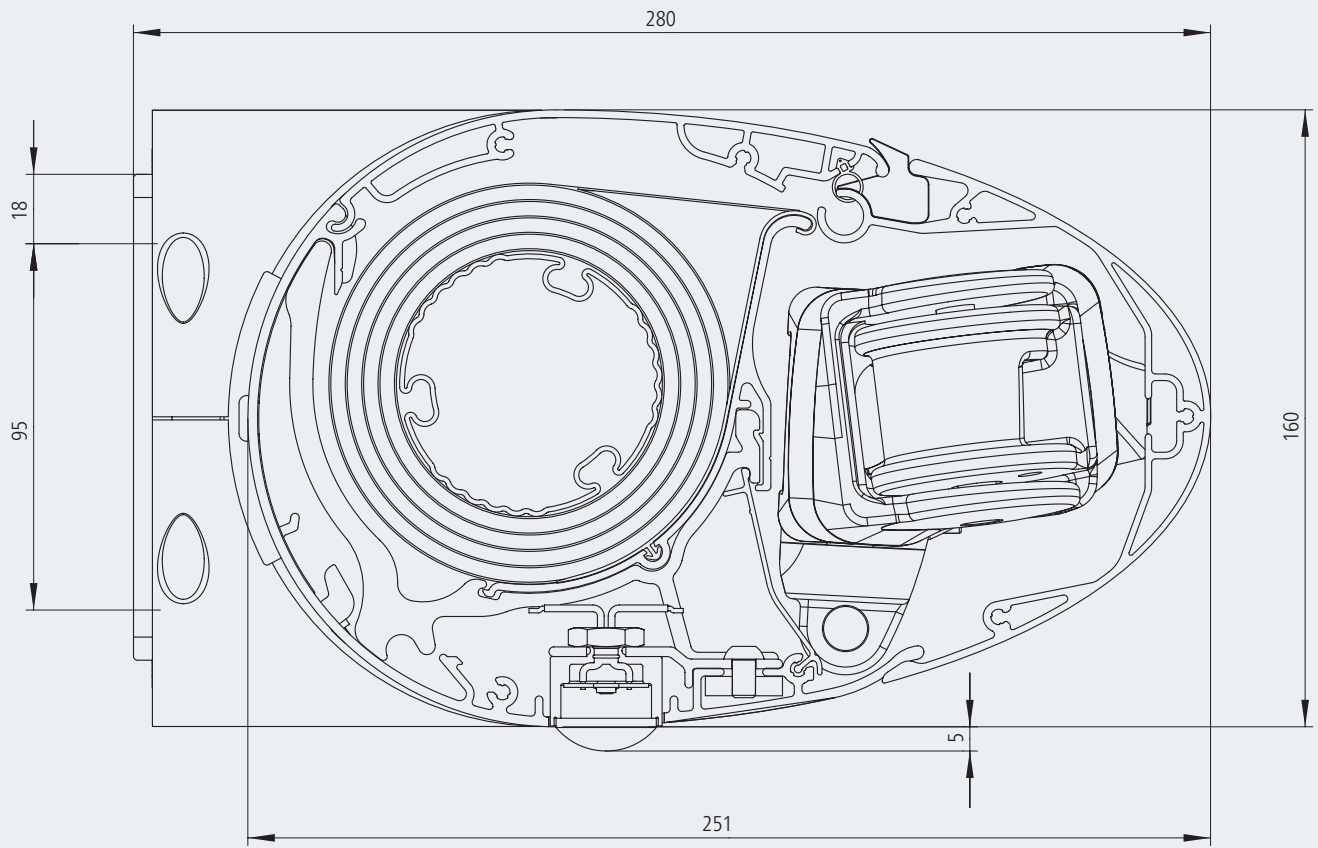


Although the Zenara only requires two brackets, it will not bend out of shape. This is all made possible by our patent-pending wire tensioning system, the same type of technology that is used for bridge construction.

The awning is pre-tensioned by means of a wire housed on the inside. This is so effective at preventing the housing from sagging that only one bracket needs to be attached to each end of the housing.

This procedure was developed in cooperation with Siegen University.

Cross-section of Zenara LED

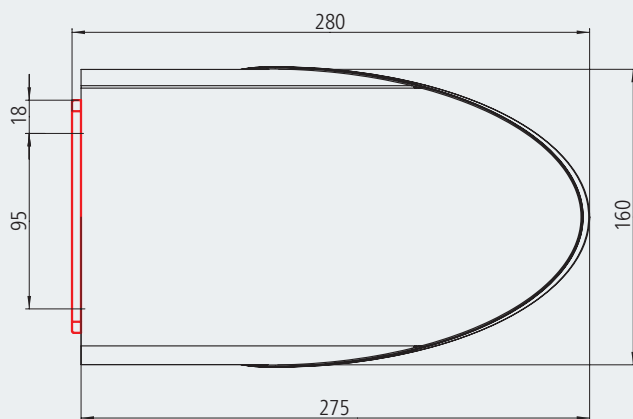
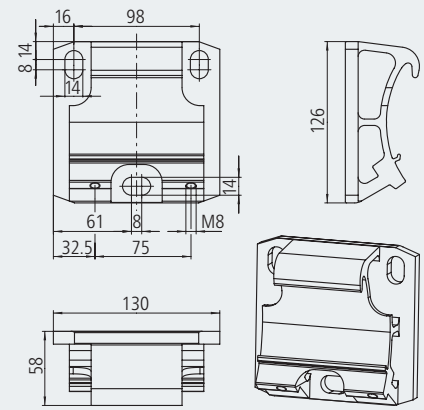


Installation on walls, ceilings or rafters – suitable for various building conditions

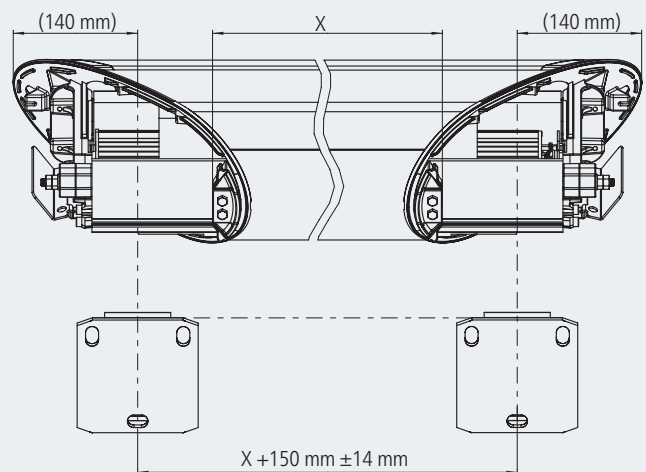
The innovative design of the weinor Zenara means that it can be mounted in a wide range of ways: not only on a wall but also on a ceiling or a rafter. The brackets and mounting plates are made of extruded, powder-coated aluminium.

Protects the building's insulation: In future, it will only be necessary to drill into the wall of a building at two installation points, which means less impact on the building's insulation.

Wall installation

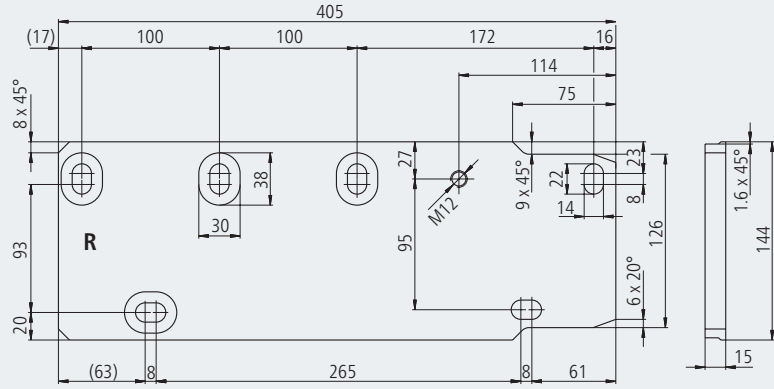


Side view with wall bracket

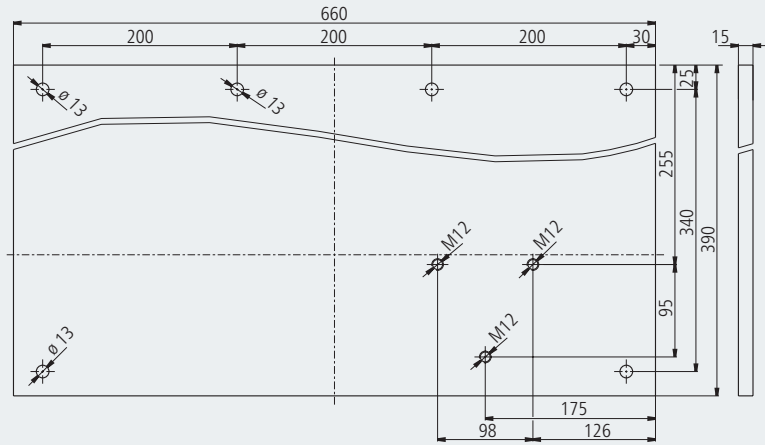


Bracket spacing

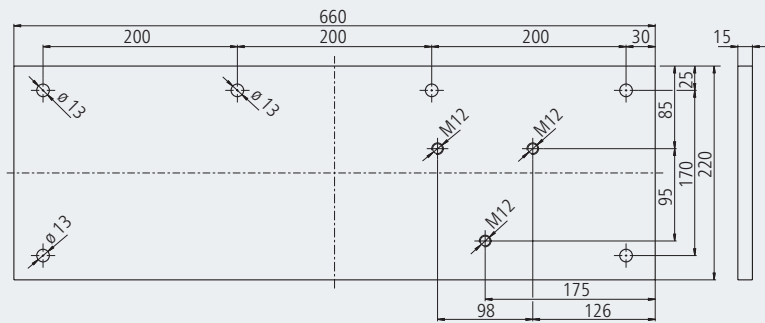
Mounting plate 405 x 144 mm x 15 mm



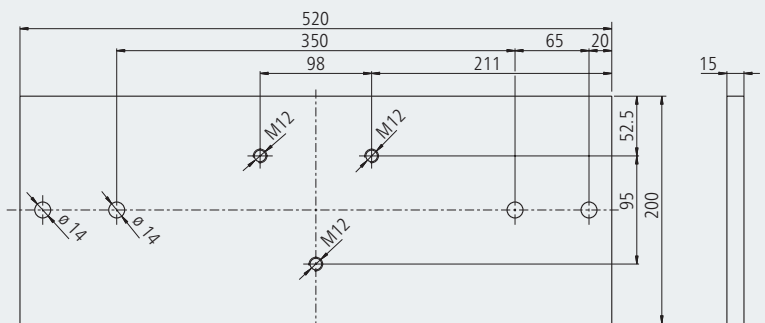
Mounting plate 660 x 390 mm x 15 mm



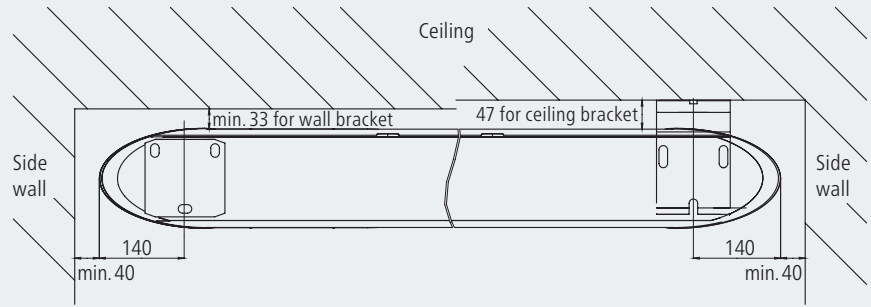
Mounting plate 660 x 220 mm x 15 mm



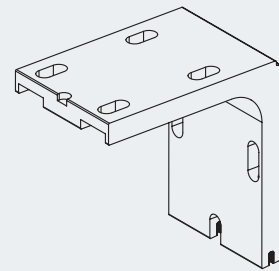
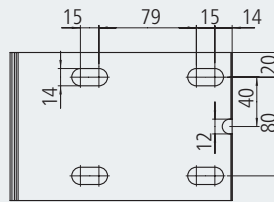
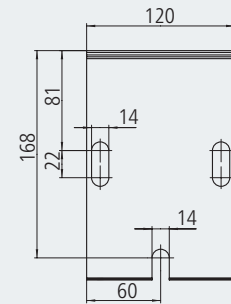
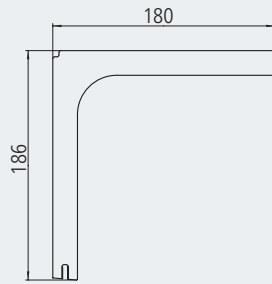
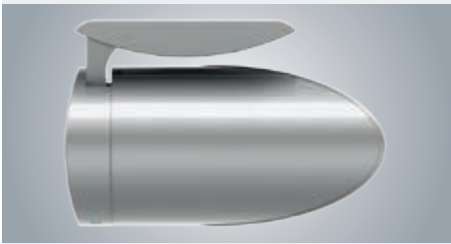
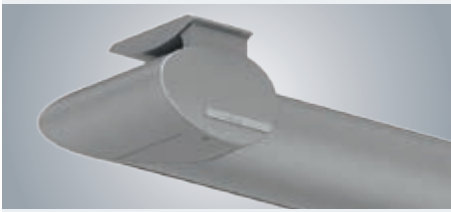
Ceiling front plate 520 x 200 mm x 15 mm



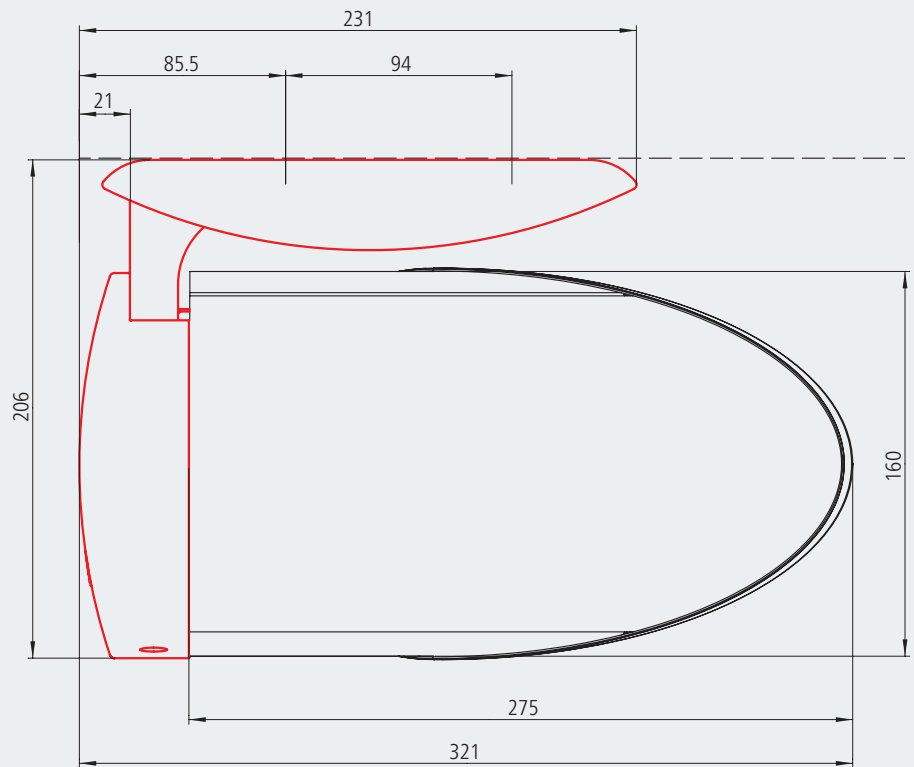
Minimum spacing distances for installation



Ceiling installation

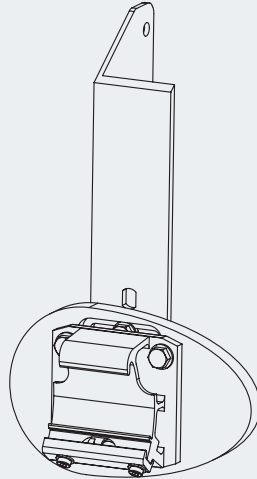


Ceiling bracket

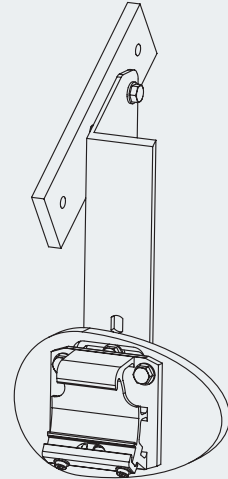


Side view with ceiling bracket

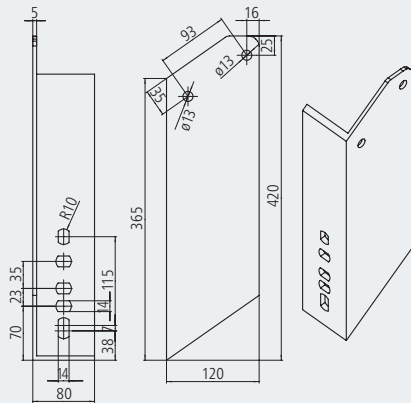
Rafter installation



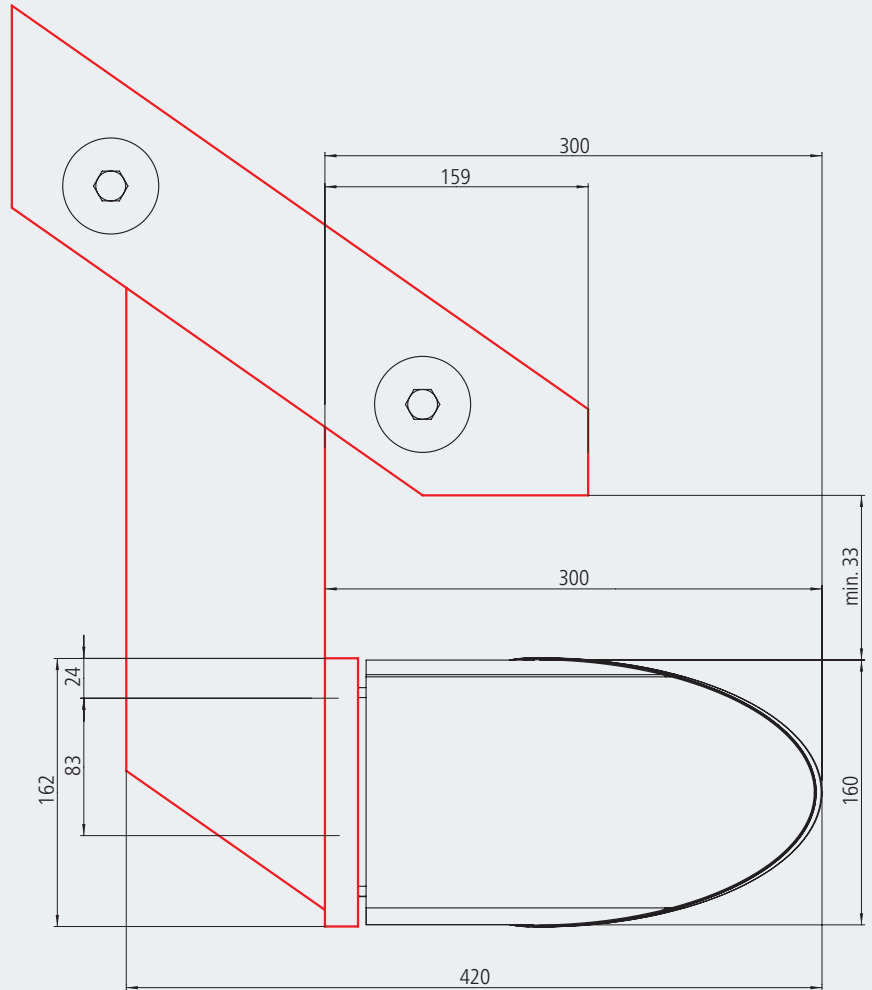
Right-hand rafter bracket



Rafter bracket with mounting plate for right-hand rafter bracket. weinor recommends using a mounting plate for the rafter bracket.



Rafter bracket



Side view with rafter installation

Extraction forces of Zenara/Zenara LED

Wall mounting on C20/25 concrete with up to 200 mm of facing,
Extraction force in N per upper fastener in wall bracket

The extraction force is the force with which the weight of the awning and the wind load pull on each upper fixing. The tables indicate this force in N per upper fixing. It varies depending on the awning size and the wall bracket/mounting plate used.

Selecting the wall bracket and anchoring system:

1. Consult relevant table for extraction force per fixing for selected awning size.

2. Select a wall bracket/mounting plate for which a fastener is available that can resist the indicated extraction force. Remember to take into account the spacing, the area which will be damaged if the fixing breaks out, the type of fixing used and the assembly base.

See separate bracket overview for other bases.

- Standard wall bracket fixings: 3* per bracket
- Mounting plate, 405 x 144 mm incl. 1 standard wall bracket and covers fixings: 6* per bracket
- Mounting plate, 660 x 220 mm incl. 1 standard wall bracket and covers fixings: 6* per bracket
- Installation on front of concrete ceiling with standard wall bracket fixings: 3* per bracket incl. ceiling front plate fixings: 4* per bracket

Width in cm	Projection in cm					
	150	200	250	300	350	400
250	732					
	330					
	182					
	709					
300	847	1262				
	382	567				
	211	314				
	820	1222				
350	961	1434	2024			
	434	644	907			
	239	356	502			
	931	1389	1959			
400	1076	1607	2265	3080		
	485	722	1015	1378		
	268	399	562	763		
	1042	1555	2192	2981		
450	1191	1779	2505	3399	4327	
	537	799	1123	1520	1933	
	296	442	621	842	1071	
	1153	1722	2425	3291	4189	
500	1305	1951	2746	3719	5356	6785
	589	876	1230	1663	2392	3027
	325	485	681	921	1326	1679
	1264	1889	2658	3600	5185	6569
550	1420	2124	2987	4550	5830	7379
	640	954	1338	2035	2604	3292
	354	528	741	1127	1444	1826
	1375	2056	2891	4404	5644	7143
600	1535	2296	3227	4918	6305	7972
	692	1031	1446	2200	2816	3557
	382	570	800	1219	1561	1973
	1486	2223	3124	4761	6104	7718
650	1649	2468	3900	5286	6779	8566
	743	1109	1748	2365	3028	3822
	411	613	967	1310	1678	2119
	1597	2389	3775	5118	6563	8293

Ceiling installation on C20/25 concrete
Extraction force in N per upper fastener in ceiling bracket

- Zenara ceiling bracket with wall bracket and cover fixings: 3* per bracket

Width in cm	Projection in cm					
	150	200	250	300	350	400
250	455					
300	530	779				
350	605	888	1243			
400	679	997	1394	1889		
450	754	1106	1544	2087	2658	
500	829	1215	1695	2286	3272	4152
550	903	1324	1845	2777	3564	4517
600	978	1433	1996	3004	3856	4882
650	1053	1543	2388	3230	4147	5248

* number of fixings required on site

Rafter installation

Shear forces in N per bracket for rafter installation

- 1 rafter bracket plus
1 standard wall bracket and cover,
one of each for left and right

- 1 rafter bracket plus
1 mounting plate for rafters plus
1 standard wall bracket and cover,
one of each for left and right

Width in cm	Projection in cm					
	150	200	250	300	350	400
250	1328					
	611					
300	1539	2301				
	712	1020				
350	1750	2617	3713			
	812	1162	1605			
400	1961	2932	4153	5519		
	913	1305	1799	2351		
450	2172	3248	4594	6106	8939	
	1013	1447	1992	2603	3749	
500	2383	3563	5035	6693	9808	12486
	1114	1590	2185	2855	4115	5198
550	2594	3879	5476	8159	10677	13577
	1214	1732	2378	3463	4481	5654
600	2805	4194	5916	8930	11544	14669
	1315	1875	2571	3749	4846	6110
650	3016	4510	7083	9501	12412	15760
	1415	2017	3057	4035	5212	6566

Awnings



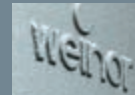
Awning



Awning with Valance Plus and Tempura



Awning with Valance Plus and Paravento



Premium quality
Made in Germany

Pergola awnings



Pergola awning
PergoTex II
and Tempura



Pergola awning
Plaza Home
and Paravento



Pergola awning
Plaza Pro with Paravento
and VertiTex

Customised,
systemised solutions

Patio roof and Glasoase®



Glasoase® with
conservatory awning and
all-glass elements



Patio roof with
SUPER LITE fixed glazing



Terrazza patio roof with
Sottezza II sun protection

Patent no			
994221	1936061	2383402	EP1936105
1206609	1936062	2458107	EP2136214
1382770	2009192	2631386	EP3048213B1
1522650	2072709	3054063	EP3054063B1
1541776	2136013	EP0916781	
1564364	2199484	EP0959195	
1835089	2202376	EP1310609	

Last revised: 08/2017

The current issue can be found at www.weinor.de/fachpartner/service/downloadcenter