



Cassette awning

Kubata

Kubata LED

Cubic shapes are a popular style element for contemporary facades. The **Kubata** cassette awning blends ideally into these. With its clear design it complements modern architecture perfectly. But the high-quality technology is also impressive: LED spotlights integrated into the cassette, the weinor LongLife arm, convenient control and large choice of fabrics and colours – leaving nothing to be desired.

UPDATE october 2019

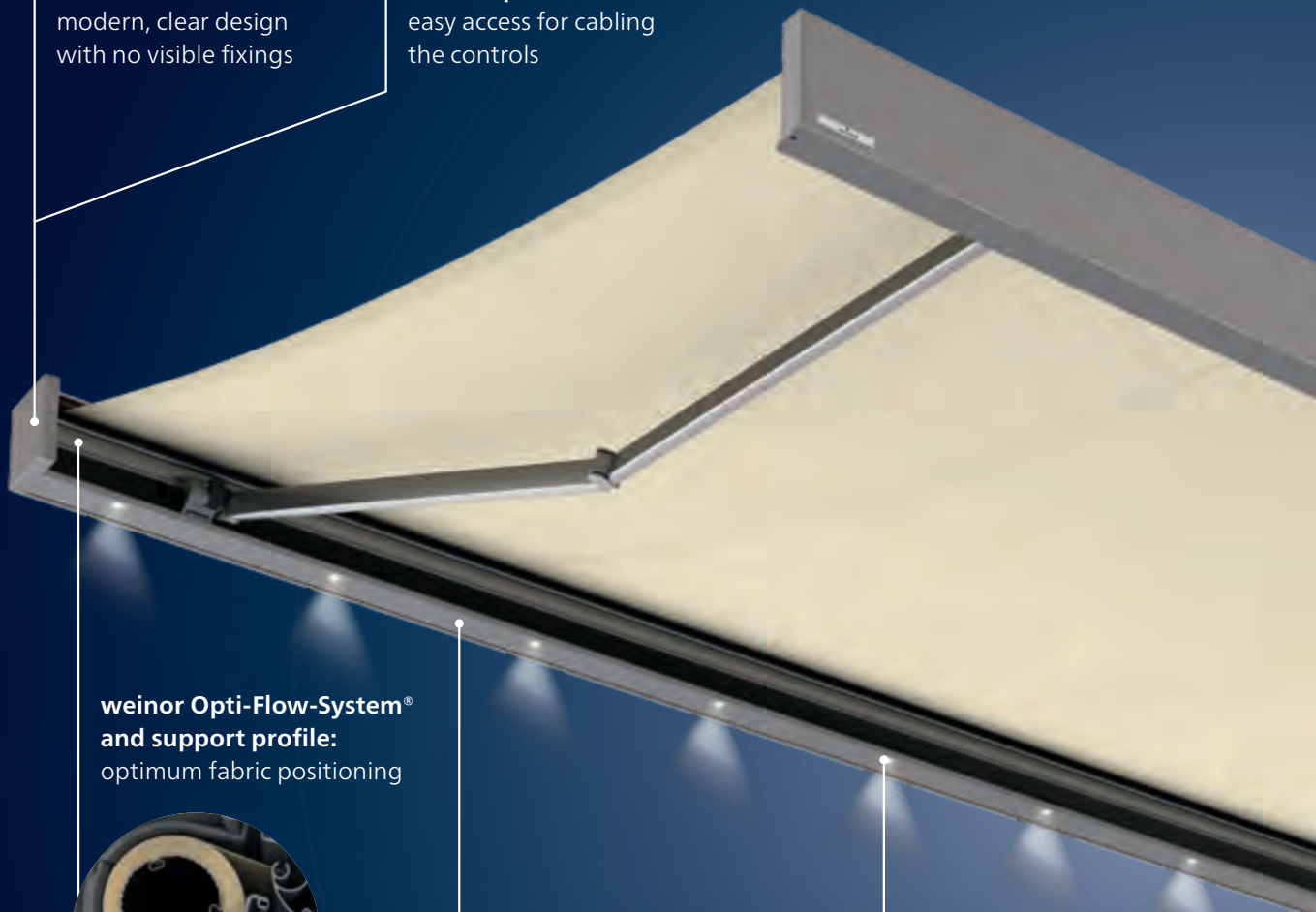
Page 13,
Table, technical drawing
added
Page 14,
Technical drawing added,
1 page with technical
drawings added
Page 17,
Whole page added



**Cubic,
clean lines:**
modern, clear design
with no visible fixings



**Removable
cover caps:**
easy access for cabling
the controls



**weinor Opti-Flow-System®
and support profile:**
optimum fabric positioning



Simple installation
with wall bracket
and carrier bar

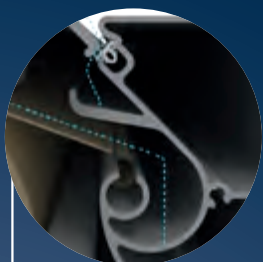


LED lighting:
integrated
into the cassette



Kubata Highlights

01



Reliable drainage:
no ingress of
rainwater

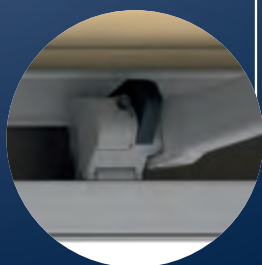


**weinor
LongLife arm:**
durable and
quiet



**Easy assembly front
profile end cap:**
no visible fixings and
integrated water
drainage outlet

**Wind lock safety
device:**
well sheltered
even in winds



2 versions:

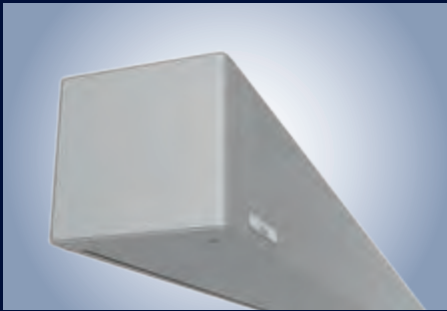


cassette with
back plate



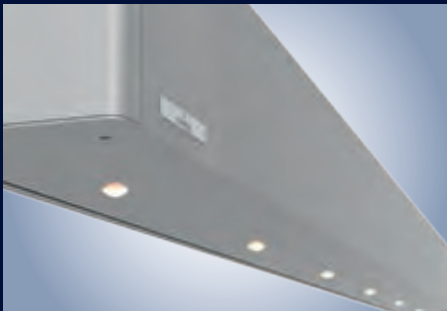
cassette without
back plate

Kubata Benefits



Cubic, clean lines – modern contemporary design

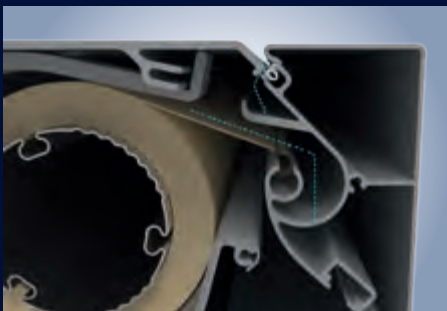
The Kubata's Opti-Flow-System® from weinor is fitted with a support profile across the whole width of the awning that ensures optimum fabric positioning.



Kubata LED – cassette with integrated LED lighting

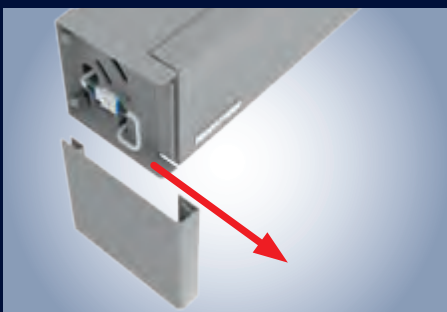
The LED spotlights integrated into the cassette produce atmospheric lighting on the patio:

- 30,000 LED light hours with lowest energy consumption (85% electricity saving compared to halogen technology)
- LED infinitely dimmable using weinor's BiConnect control



Reliable drainage – rainwater is drained off in a controlled way

The front profile is equipped with a new drainage system. The fabric is reliably protected from getting wet as a result.



Removable cover caps – easier access for the receiver/cable connections

The cover caps on both sides can be removed using the clip technology. As a result, it is very easy to disconnect the drive and controls and it is easier to carry out maintenance work.



Wind lock safety device – well-sheltered even in winds

Proven technology prevents the awning from lifting up when wind gusts from below:

- Tilting folding arm with wind lock safety device
- Proven, maintenance-free technology
- Forged and extruded aluminium components

Kubata Technology

01

Kubata versions	Kubata	Kubata LED
Technology		
Max. width	650 cm	650 cm
Max. projection	400 cm	400 cm
Cassette size (W x H) incl. standard bracket	210 mm x 205 mm	210 mm x 205 mm
Gear drive	○	—
Motor drive	● as standard	● as standard
Angle of pitch on awning	5° to 40°	5° to 40°
Installation alternatives	can be installed on walls, ceilings and rafters	
LED lighting (separate spotlights)	—	● integrated in bottom profile
OptiNut roller tube	● as standard	● as standard
LongLife arm	● as standard	● as standard
Accessories		
Tempura Quadra heating system	○	○
BiSens Agido-3V product protection sensor	○	○
Controls		
Radio control	○	○
No remote	●	●
Weather sensors		
Sun/wind sensor BiConnect BiSens SW-230 V	○	○
Sun/wind sensor solar powered BiConnect BiSens SW-Solar+	○	○
Sun/wind/rain sensor BiConnect BiSens SWR-230V	○	○
Quality		
Tested up to	wind resistance class 2 according to DIN 13561 (wind strength 5 on the Beaufort scale)	

● Standard ○ Option — Not available

Weight table

Width in cm	Projection in cm					
	150	200	250	300	350	400
Weight in kg						
200	46					
250	54	56				
300	61	63	66			
350	68	70	74	79		
400	76	78	81	86	90	
450	83	85	88	94	98	106
500	90	92	96	101	105	114
550	99	101	105	110	113	122
600	106	109	113	118	124	130
650	114	116	120	125	131	137

weinor professional tips:

Scan the QR code



or view or download them online at:

www.weinorpartner.com/weinor-professional-tips/kubata now.

Kubata LED



LED lighting – 30,000 hours of lighting with lowest energy consumption

Select LED components for top weinor quality:

- Atmospheric light thanks to special glass lenses
- Visually integrated into the cassette*
- Lighting remains on even when awning is retracted
- Highly energy-efficient
- Operating life of 30,000 hours
- Infinitely dimmable when used with BiConnect radio control
- Easy to service: replace individual LED lights just by dismantling the bottom profile

* Cassette bottom section with integrated LED lights is not assembled.



Integrated LED lighting

Width in cm	Projection in cm						
	100	150	200	250	300	350	400
	Number of LED spotlights						
200	3	3					
250	3 - 4	3 - 4	4				
300	4	4	4	4 - 5			
350	6 - 7	6 - 7	6 - 7	5 - 7	5 - 7		
400	7 - 8	7 - 8	7 - 8	7 - 8	6 - 8	6 - 8	
450	8 - 9	8 - 9	8 - 9	8 - 9	8 - 9	7 - 9	7 - 9
500	9	9	9	9	9	9	8 - 10
550	9 - 10	9 - 10	9 - 10	9 - 10	9 - 10	9 - 10	9 - 10
600	10 - 11	10 - 11	10 - 11	10 - 11	10 - 11	10 - 11	10 - 11
650	11 - 12	11 - 12	11 - 12	11 - 12	11 - 12	11 - 12	11 - 12

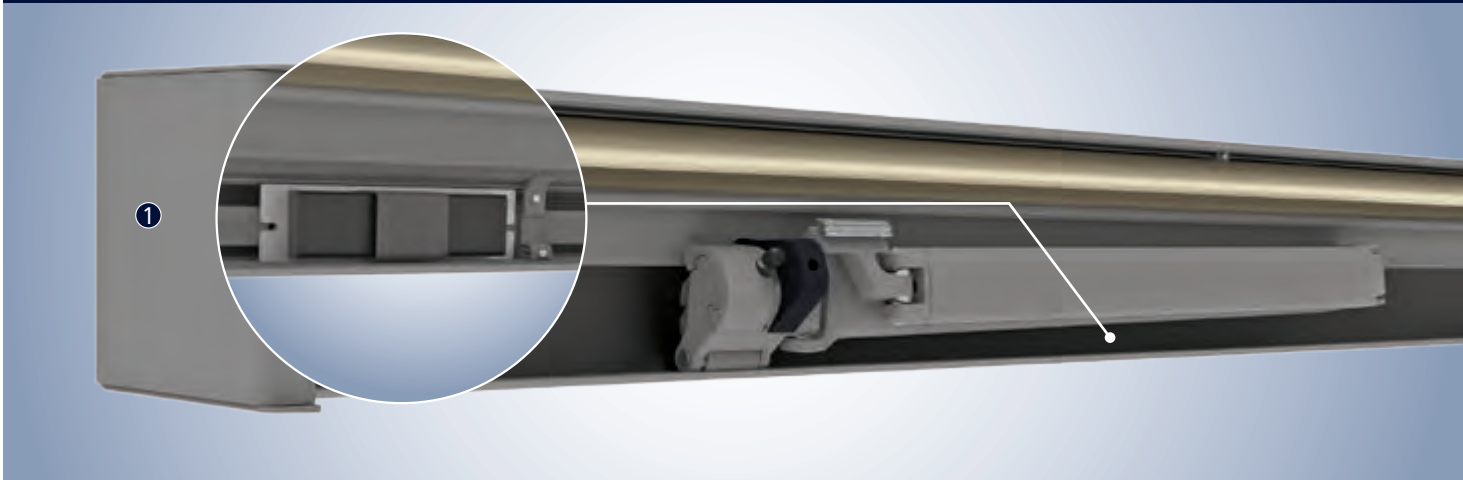
The LED spotlights are distributed automatically depending on the width/projection/ type of bracket.

This table shows the LED distribution with standard arm or bracket positions combined with the 85 mm wall bracket.



Kubata Controls

Easily accessible location for receivers/controls



Receiver, power supply pack and further electrical components (e.g. BiConnect receiver in the cassette)

The cover cap ❶ can be opened for servicing purposes. The drive can be disconnected from the receiver and controlled independently from this.

weinor BiConnect radio technology

Product	Electronics	BiConnect control	Remote receiver	Transmitter
Kubata	Kubata drive	<ul style="list-style-type: none"> • BiRec receiver 	BiRec MA-K	<ul style="list-style-type: none"> • BiEasy 1M/5M/15M Go! hand transmitter • App • 1MW-3V wall transmitter
Kubata LED	Kubata drive and LED lighting	<ul style="list-style-type: none"> • BiRec combi-receiver for main drive and LED (with integrated power supply pack) • Dimmable LED 	BiRec MLED	<ul style="list-style-type: none"> • BiEasy 5M/15M Go! hand transmitter • App
Accessories (optional)	Tempura Quadra heating	<ul style="list-style-type: none"> • Dimmable, additional receiver required • Accommodation of receiver in the design bar provided for this purpose or the Tempura Quadra box 	BiRec HD	<ul style="list-style-type: none"> • BiEasy 5M/15M Go! hand transmitter • App

Requires: awnings with BiConnect remote control and sensors require a BiEasy 1M, 5M or 15M Go!

Somfy io-homecontrol® radio technology

Product	Electronics	Somfy io-homecontrol control	Remote receiver	Transmitter
Kubata	Kubata drive	<ul style="list-style-type: none"> io-homecontrol integrated in remote-controlled motor 	Somfy io remote-controlled motor	<ul style="list-style-type: none"> Situo 1 io Pure/Situo 5 io Pure/Easy Sun io Pure Shine hand transmitter Smooove 1 io Pure Shine wall transmitter
Kubata LED	Kubata drive and LED lighting	<ul style="list-style-type: none"> io-homecontrol integrated in remote-controlled motor Additional Somfy receiver for the LED spot-lights (with downstream power supply pack) integrated into cassette LED not dimmable 	Somfy io remote-controlled motor and io lighting receiver	<ul style="list-style-type: none"> Situo 5 io Pure/Easy Sun io Pure Shine hand transmitter
Accessories (optional)	Tempura Quadra heating	<ul style="list-style-type: none"> Not possible with Somfy io-homecontrol 		

Somfy RTS radio technology

Product	Electronics	Somfy RTS control	Remote receiver	Transmitter
Kubata	Kubata drive	<ul style="list-style-type: none"> RTS control integrated in remote-controlled motor 	Somfy RTS remote-controlled motor	<ul style="list-style-type: none"> Telis 1 RTS Pure/Telis 1 Soliris RTS Pure/Telis 4 RTS Pure/Telis 4 Soliris RTS Pure hand transmitter Smooove 1 wall transmitter
Kubata LED	Kubata drive and LED lighting	<ul style="list-style-type: none"> RTS control integrated in remote-controlled motor Additional Somfy receiver for the LED spot-lights (with downstream power supply pack) integrated into cassette LED not dimmable 	Somfy RTS remote-controlled motor and RTS lighting receiver	<ul style="list-style-type: none"> Telis 4 RTS Pure/Telis 4 Soliris RTS Pure hand transmitter
Accessories (optional)	Tempura Quadra heating	<ul style="list-style-type: none"> Not dimmable, additional receiver required Accommodation of receiver in the design bar provided for this purpose or the Tempura Quadra box 	Heating Slim Receiver RTS Plug	<ul style="list-style-type: none"> Telis 4 RTS Pure/Telis 4 Soliris RTS Pure hand transmitter

**Note:**

Please see the "Accessories" technical brochure for further details regarding the drive and control.

Some options are subject to a surcharge. For prices, please refer to the weinor awnings price list.

Hard wired with Somfy control

Product	Electronics	Firmly wired Somfy control	Controls
Kubata	Kubata drive	<ul style="list-style-type: none"> Somfy control for awning drive 	e.g. Soliris Smooove Uno
Kubata LED	Kubata drive and LED lighting	<ul style="list-style-type: none"> Somfy control for awning drive Switch on site for the LED spotlights LED power supply pack integrated into the cassette LED not dimmable 	e.g. Soliris Smooove Uno and suitable light switch (on site)
Accessories (optional)	Tempura Quadra heating	<ul style="list-style-type: none"> Not dimmable 	Suitable switch (on site)

Hard wired (switch/control on site)

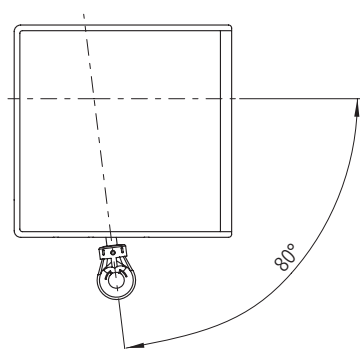
Product	Electronics	Hard wired control	Controls
Kubata	Kubata drive	<ul style="list-style-type: none"> Awning switch for the awning drive 	e.g. Double rocker switches (on site)
Kubata LED	Kubata drive and LED lighting	<ul style="list-style-type: none"> Awning switch for the awning drive Switch on site for the LED spotlights LED power supply pack integrated into the cassette LED not dimmable 	e.g. Double rocker switch and suitable light switch (on site)
Accessories (optional)	Tempura Quadra heating	<ul style="list-style-type: none"> Not dimmable 	Suitable switch (on site)

Gear drive (optional)



The Kubata can of course be extended and retracted using a gear handle too (with a max. projection of 350 cm). This option is recommended whenever it is hard to connect to an electrical power source on the site or if the awning is not frequently used.

- The Kubata has a universal bevel gear system
- Tested according to DIN EN 14203
- Freewheel device when extended

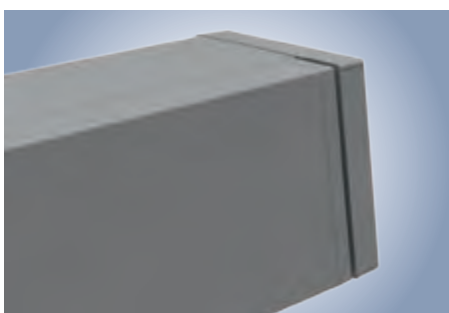


Standard gear outlet

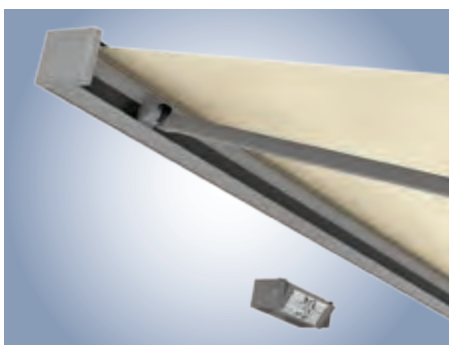
Regulating the front profile



Two stop eccentric tappets are installed on each side of the Kubata. They are used to regulate or adjust the closing position. This gives the awning cassette a visually harmonious overall look.



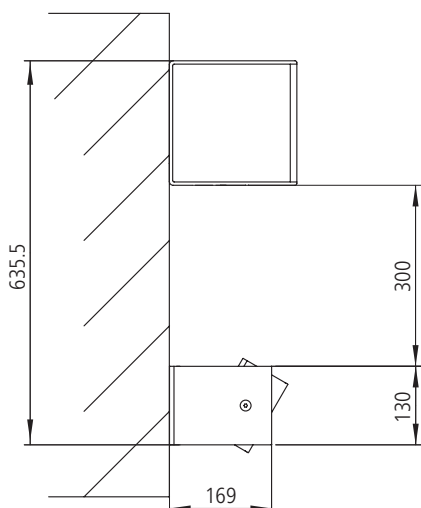
Tempura Quadra heating system (option)



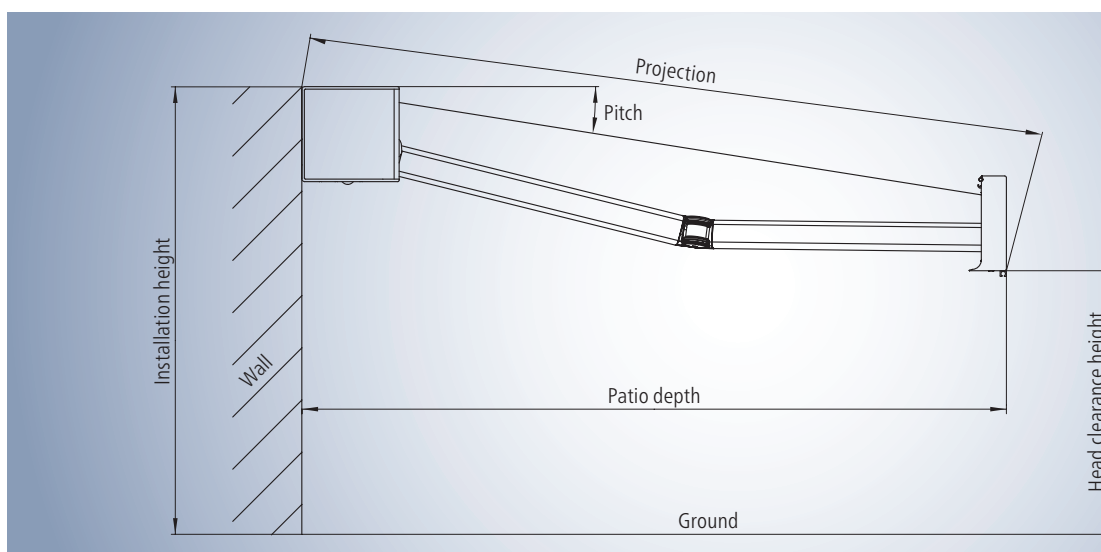
The perfect combination: Kubata with Tempura Quadra heating system and BiConnect*:

Please note:

The Tempura Quadra angle of pitch is restricted to 15° as standard (this restriction is to avoid the wall being heated up too much by the Tempura). The grub screw, which restricts the angle of pitch, can be removed if the Kubata is pitched up to 10° at the most. Then it is possible to adjust the Tempura Quadra's angle of pitch up to 30°.



Kubata Planning



Site measurements – determining the projection and head clearance height

- Find the projection by looking in the “Projection” table for the terrace depth.
- Using the projection from the table and the required angle of inclination, consult the “head clearance height” table for the head clearance height. This head clearance height refers to an installation height of 300 cm.
- Add/subtract the difference between 300 cm and the actual installation height to/from the head clearance height in the table.

Determining the projection

Pitch angle	Patio depth in cm					
	150	200	250	300	350	400
5°	161	211	261	311	361	400
15°	165	217	269	321	372	400
25°	176	231	286	341	396	400

Projection in cm (rounded figures)

This table can be used to find the awning projection for any given horizontal patio depth. Please note that the awning projection is possible in 10 cm increments so this has to be rounded up or down.

Determining the head clearance height

Pitch angle	Projection in cm					
	150	200	250	300	350	400
5°	272	268	263	259	254	250
15°	246	233	220	207	194	181
25°	222	200	179	158	137	116

Head clearance height in cm (rounded figures)

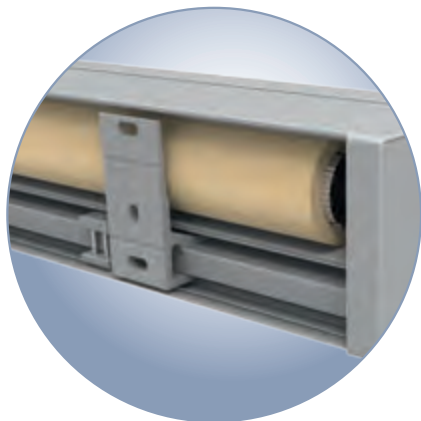
This table is used to find the head clearance heights for various projections when the angle of pitch is 5°, 15° or 25°.

This table is based on the example of an installation height of 300 cm (edge of awning).

Wall bracket

Sizes and bracket recommendations

Update



Width in cm	Projection in cm					
	150	200	250	300	350	400
200	2					
250	2	2				
300	2	2	2			
350	2	2	2	2		
400	2	2	2	2	2	
450	2	2	2	2	2	2
500	3	3	3	3 / 2;1	2;1	2;1
550	3	3	3	3 / 2;1	2;1	2;1
600	3	3	3	3 / 2;1	2;1	2;1
650	3	3	3	3 / 2;1	2;1	2;1
700	3	3	3	2;1		

Wall mounting on C20/25 concrete

Information applies to wall mounting on a pressure-resistant substrate of C20/25 concrete.

Please see the bracket price list for the respective sizes and bracket version extraction forces.

- 2 1 wallbracket 85 mm per arm, in total 2 pieces
- 3 1 wallbracket 85 mm per arm, 1 centre bracket, in total 3 pieces
- 2 1 wallbracket 295 mm per arm, in total 2 pieces
- 2;1 1 wallbracket 295 mm per arm, 1 centre bracket, in total 2+1 pieces
- 2 Transition 1 to 2 brackets per arm
- 3 / 2;1 Transition 1 to 2 brackets per arm, with centre bracket
- 2 Observe the size limits; 40 cm for 1 bracket per arm
60 cm for 2 brackets per arm (or 1 bracket 295 mm)

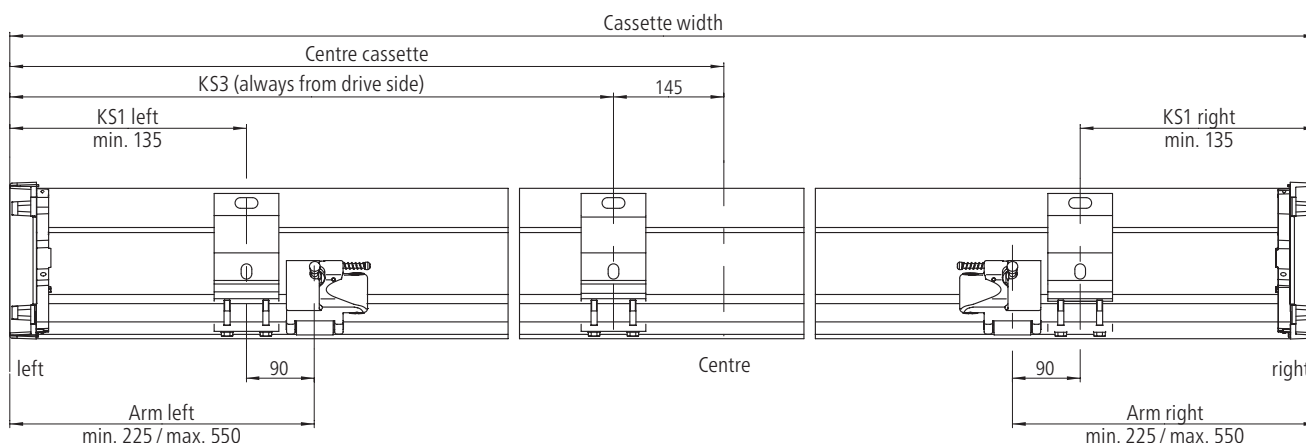
2 brackets per arm from:

Width	Projection
all	320
401	310
451	300
501	290
551	280
601	270
651	260

Position of wall brackets and Kubata cassette

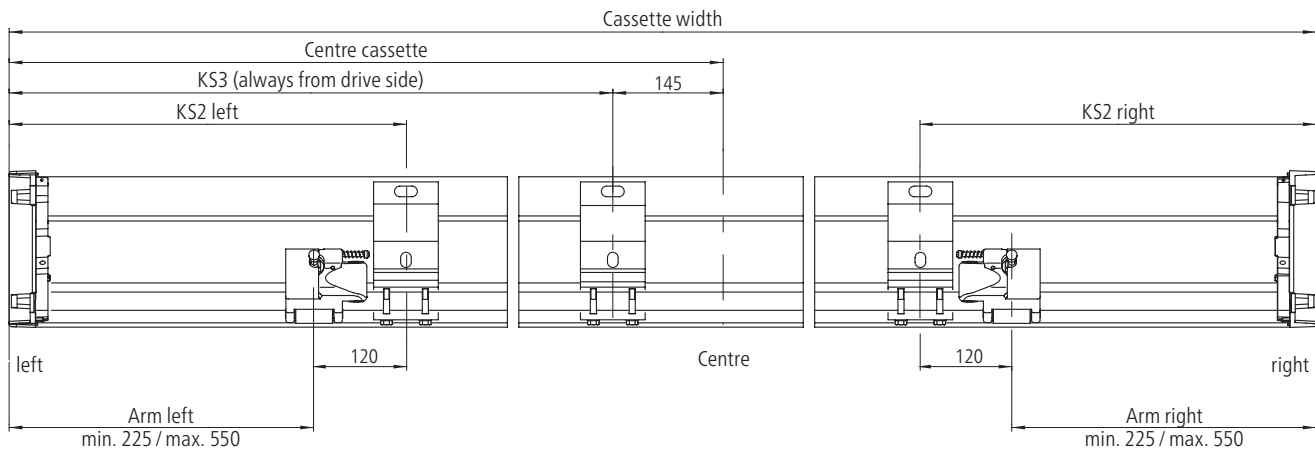
Update

Wall bracket 85 outside (KS1)

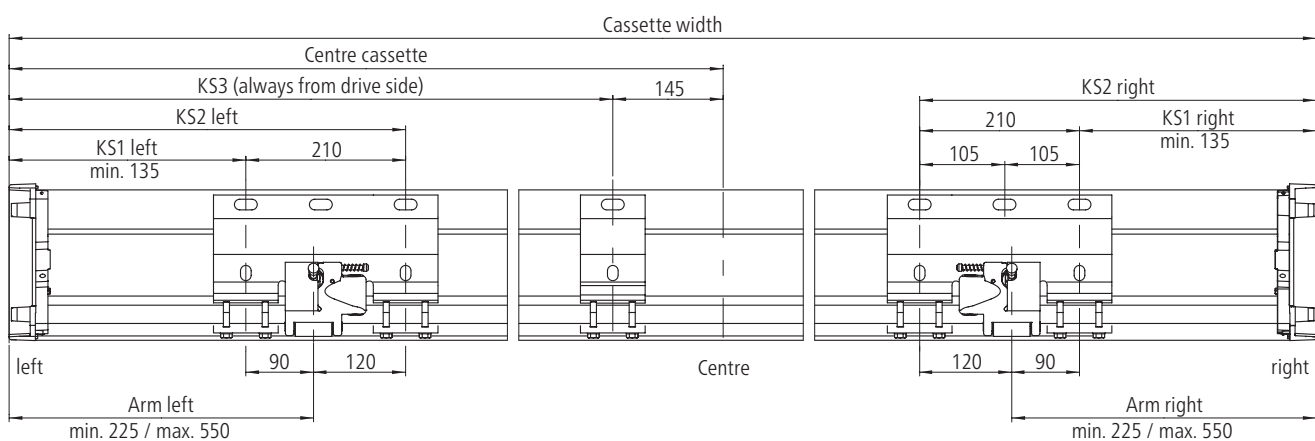


Position of wall brackets and Kubata cassette

Wall bracket 85 inside (KS2)



Wall bracket 295

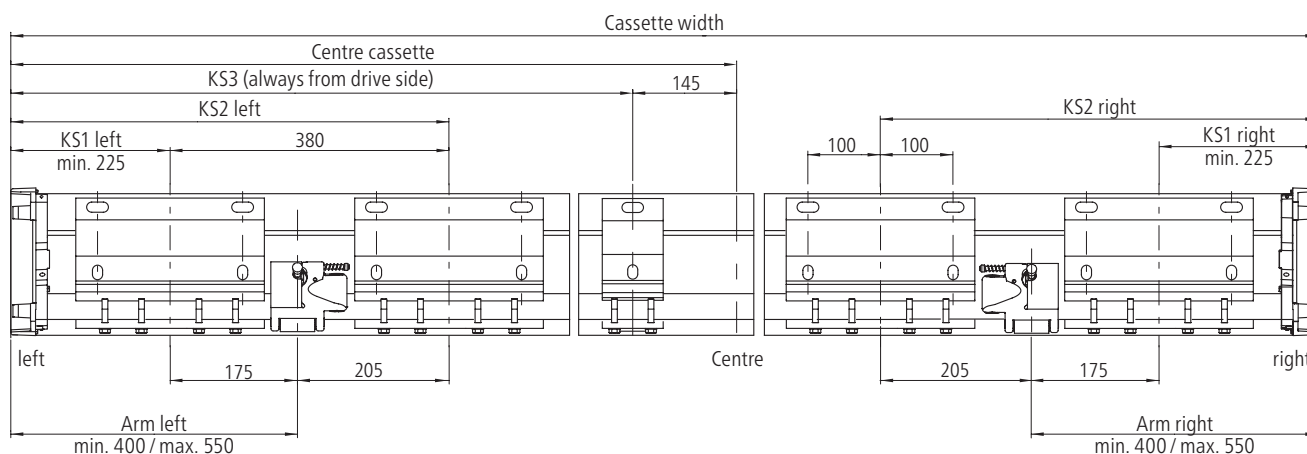


Notes:

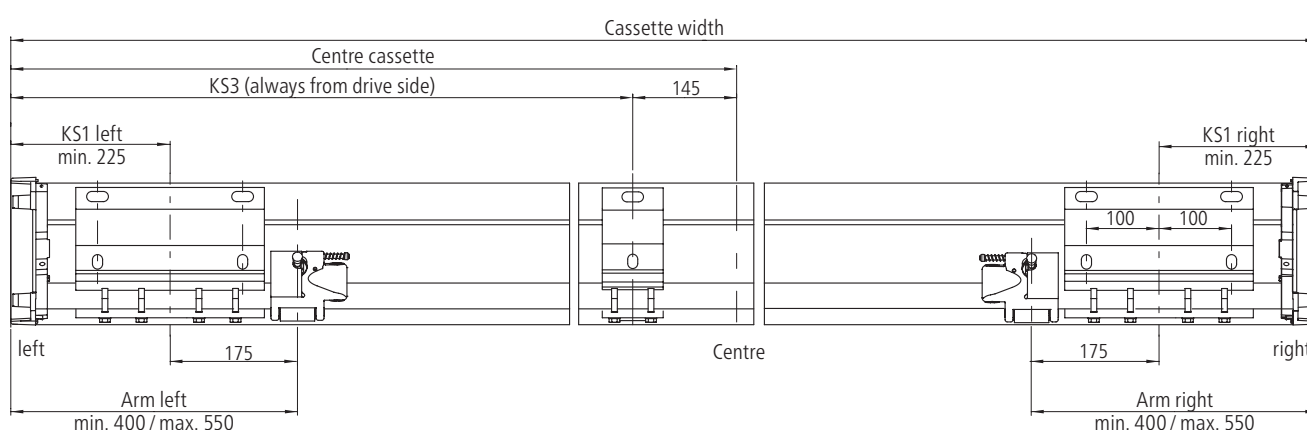
KS1 = outside bracket
 KS2 = inside bracket
 KS3 = centre bracket

Position of wall brackets and Kubata cassette

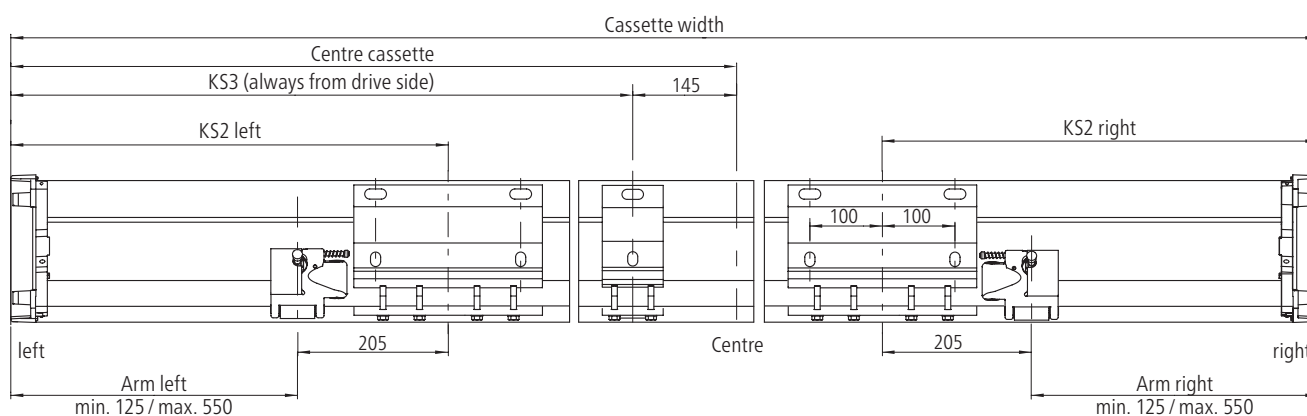
Wall bracket 260 on both sides (KS1 and KS2)



Wall bracket 260 outside (KS1)



Wall bracket 260 inside (KS2)



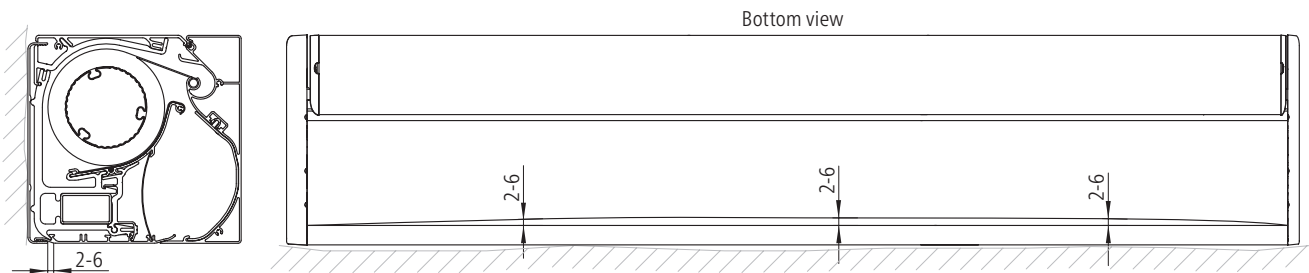
Notes:

KS1 = outside bracket

KS2 = inside bracket

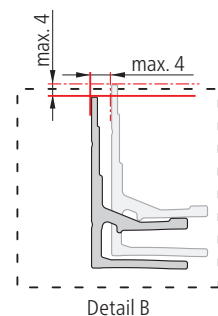
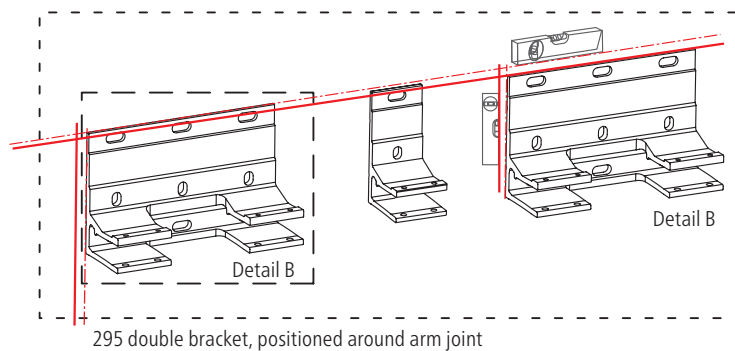
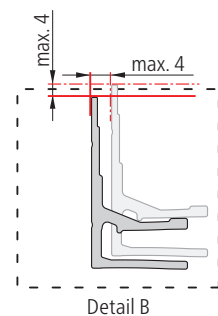
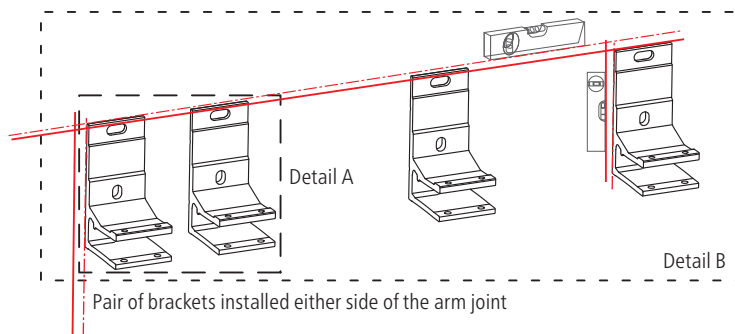
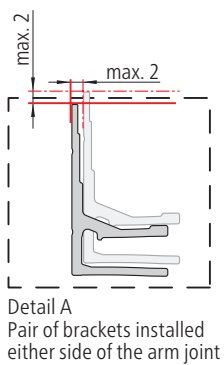
KS3 = centre bracket

Installation allowances



House walls are never totally straight. Which is why there is an automatic compensation function between the bottom profile and back plate with the Kubata. Up to 4 mm can be compensated for as a result. This guarantees that the awning cassette is

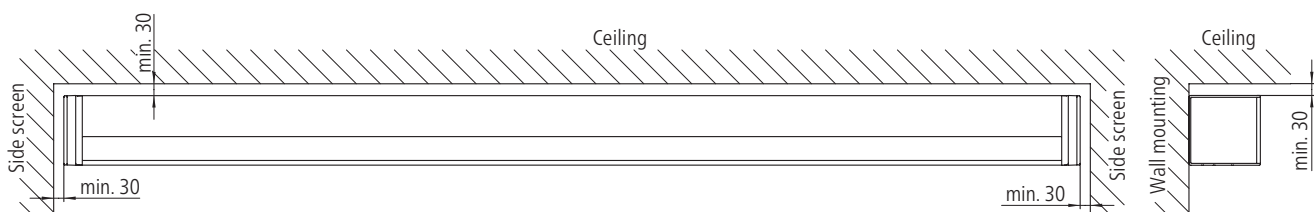
straight and the front profile closes perfectly as a result. A maximum 4 mm shift can be produced on the movable transition between the bottom profile and back plate using this function. It is necessary to align the cassette ideally.



Detail A: The tolerance of the brackets around the arm joint is a maximum of 2 mm.

Detail B: The outer brackets tolerance is a maximum of 4 mm.

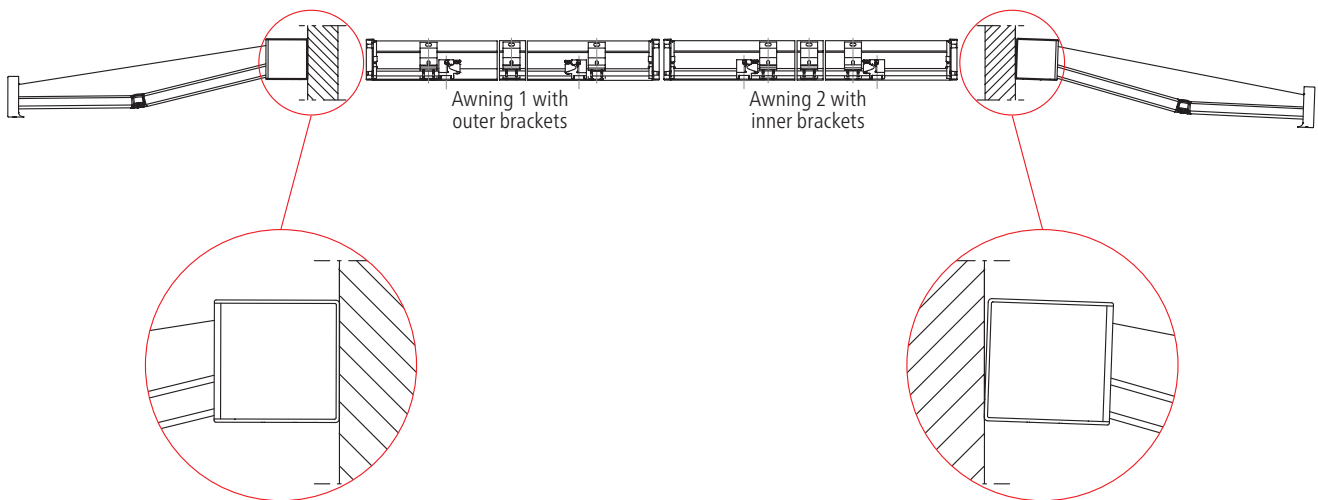
Minimum spacing distances for installation in the niche (wall mounting)



Installation in a row

When installing the Kubata in a row, it should be ensured that the brackets of both awnings are installed either internally or externally. In this way, the housing closes flush onto the wall.

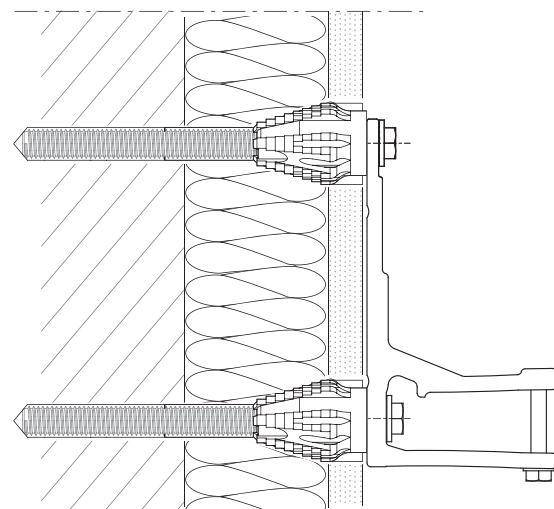
If an awning with inner brackets and one with outer brackets is installed, a slight offset of the housing can occur when retracted, depending on the arm position and the surface.



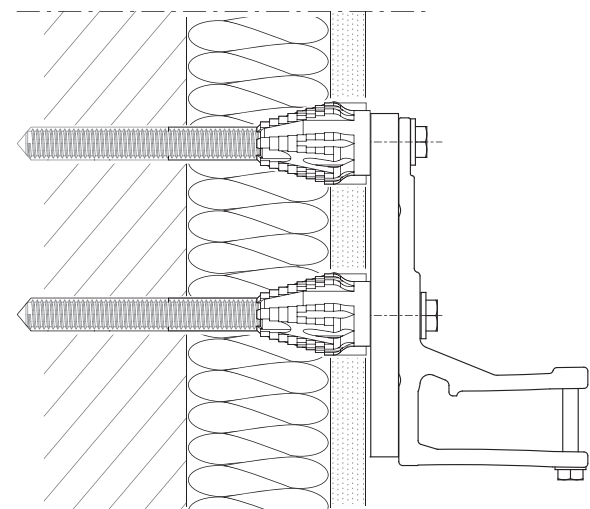
Mounting on non-pressure-resistant surface

Please note that in the case of installation on insulated facades (EIFS), the lower drilled hole of the brackets is to be used.

As an alternative, you can use the middle drilled hole with the reinforced base plates 100 x 180 x 15 mm.



Wall bracket without base plate



Wall bracket with base plate

Size limits (width) Kubata for 85 mm wall bracket without Agido

Width in cm	Projection in cm											
	150	160	170	180	190	200	210	220	230	240	250	260
200												
210												
220												
230												
240												
250												
260												
270												
280												
290												
300												
310												
320												
330												
340												
350												
360												
370												
380												
390												
400												
410												
420												
430												
440												
450												
451-649												
650												

	Producible
	Not producible
	Not producible

Deduction dimension X* = 40 cm
 * Min. width = projection + deduction dimension X

Explanation

Producible: 200 cm width of awning and 160 cm projection

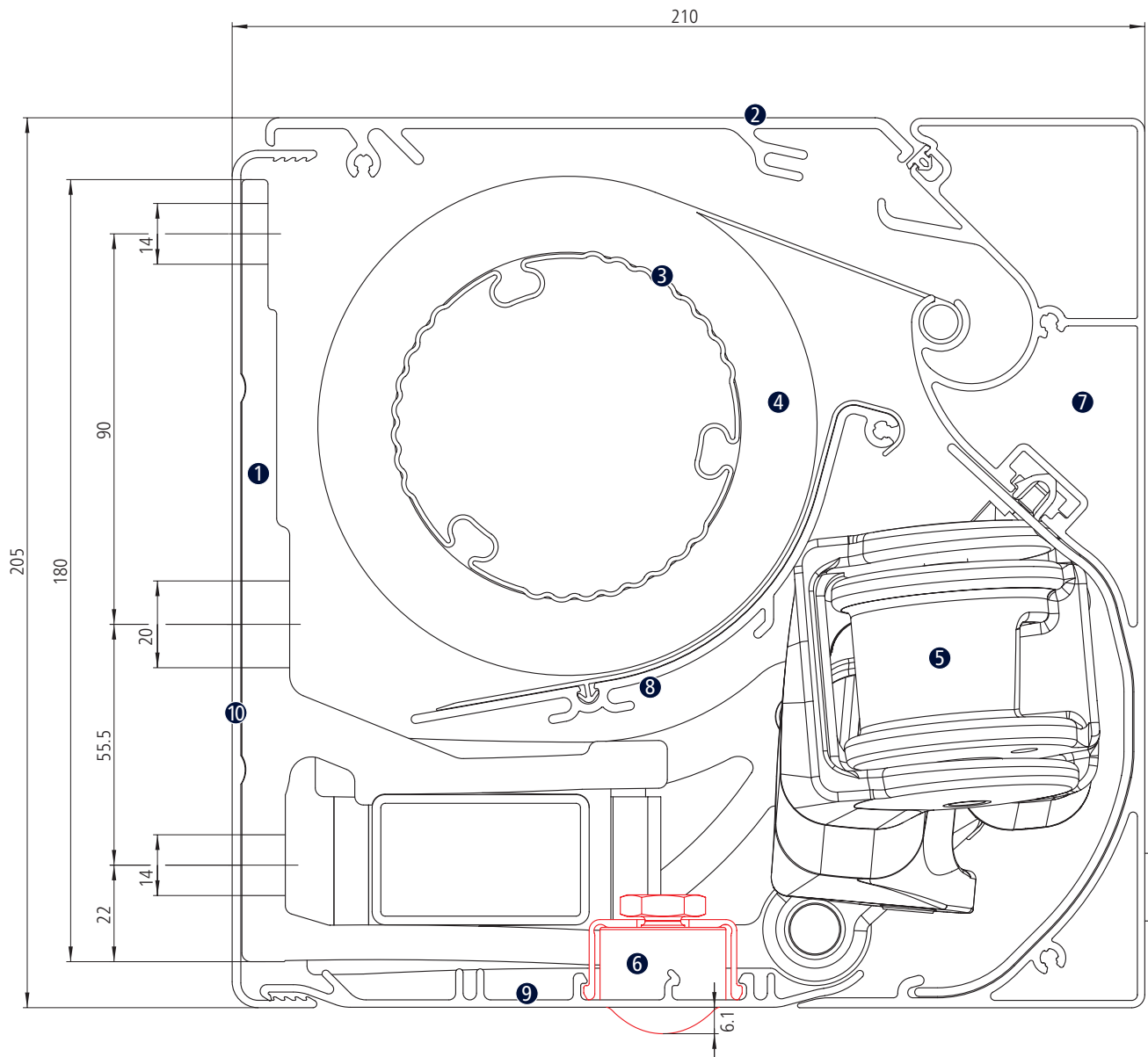
Not producible: 200 cm width of awning and 170 cm projection

- The limiting widths shown refer to Kubata with 85 brackets (KS2) without BiConnect Agido.
- When using the BiConnect Agido the required width is increased by 14 cm.
- When using brackets in the outside position (KS1) or with sprung use (KS1 and KS2), the required width increases by 13 cm.
- Dimension limits do not apply to Kubata LED. Our employees at the Customer Center will be happy to check these on request.

[illegible]

Cross-section

Kubata LED

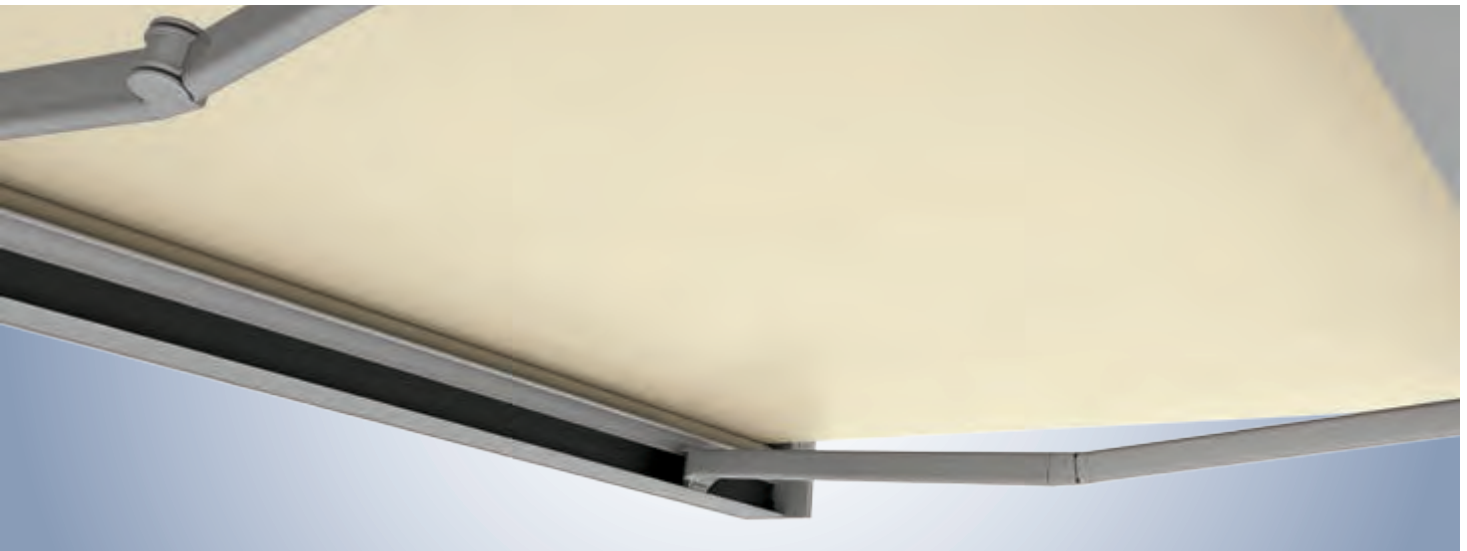


- ① Wall bracket
- ② Roof profile
- ③ Fabric roller bearing
- ④ Fabric rolls
- ⑤ Spring-tensioned arm

- ⑥ LED spotlight
- ⑦ Front profile
- ⑧ Support profile
- ⑨ Bottom profile
- ⑩ Back profile

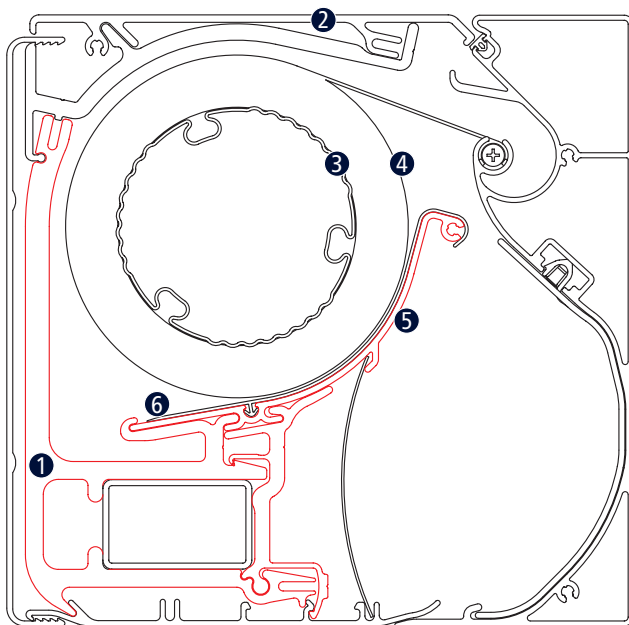
Kubata Support Profile

01

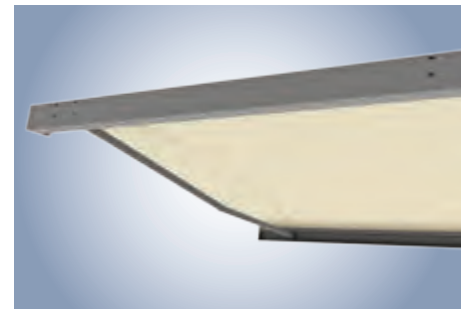


Kubata: support profile across the whole width of the awning

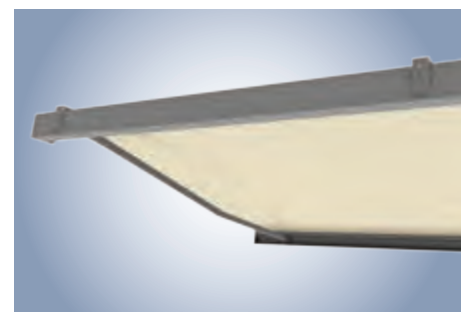
The weinor Opti-Flow-System® and support profile across the whole width of the awning ensure optimum fabric positioning.



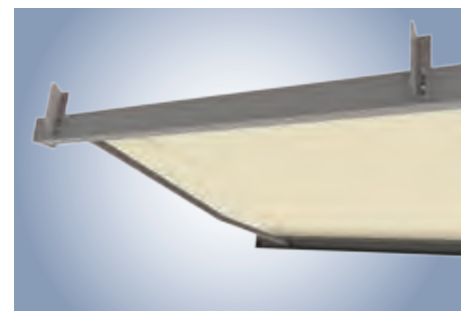
- ① Housing bracket
- ② Cassette
- ③ Fabric roller bearing
- ④ Fabric rolls
- ⑤ Support profile
- ⑥ Glide profile



Kubata centre bracket: wall mounting (rear view)



Kubata centre bracket: roof mounting (rear view)



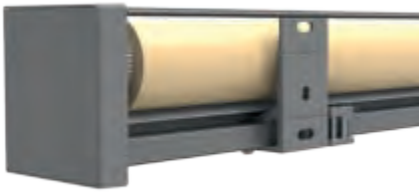
Kubata centre bracket: rafter mounting with rafter bracket (rear view)



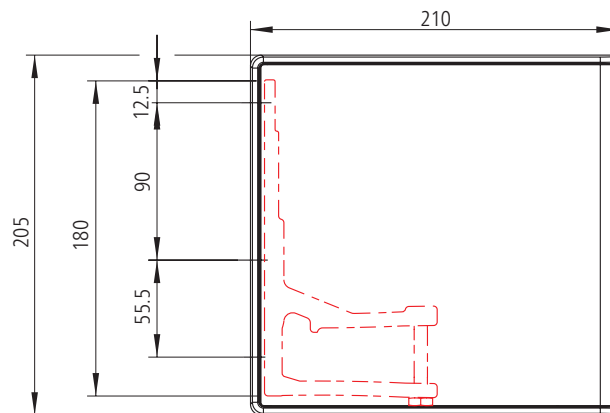
Kubata Installation

Wall mounting – brackets

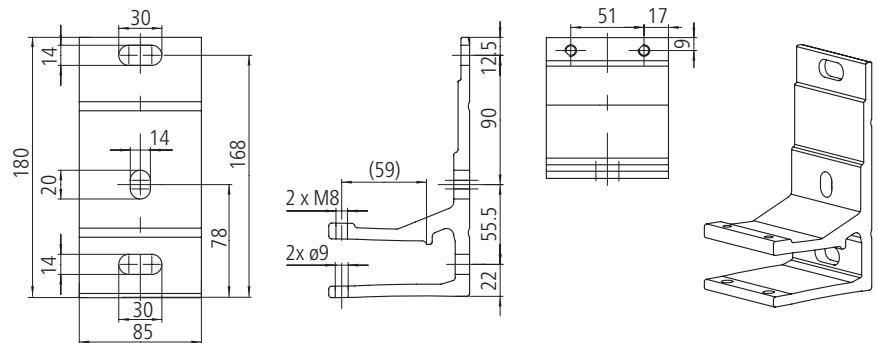
01



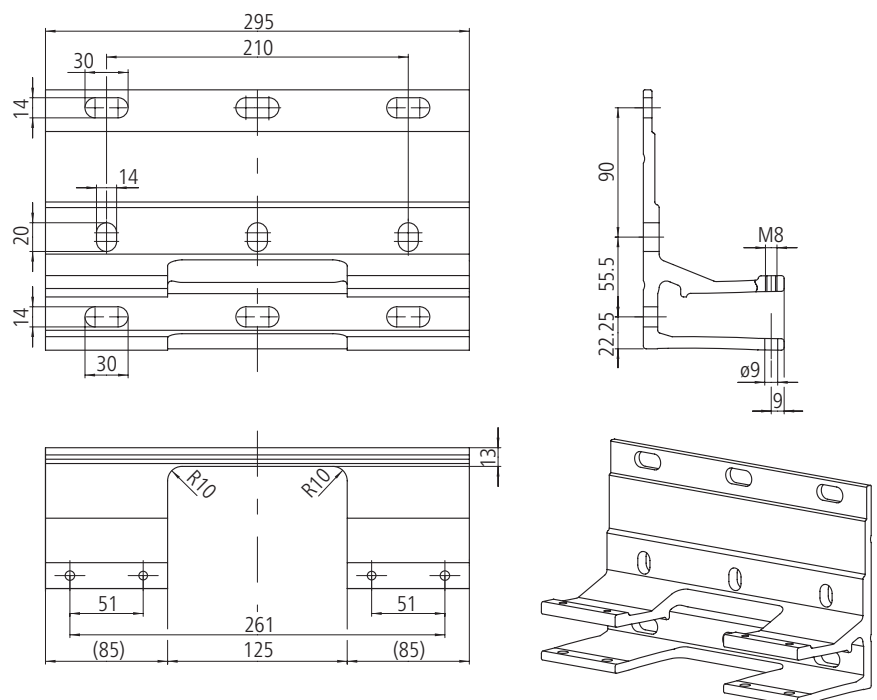
Wall bracket



85 mm wall bracket



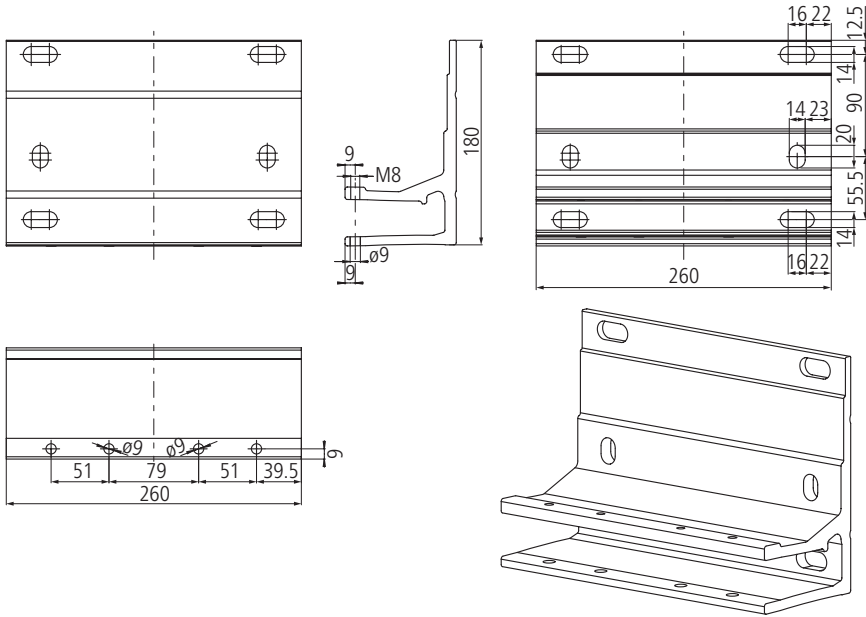
295 mm wall bracket (arm enclosure)



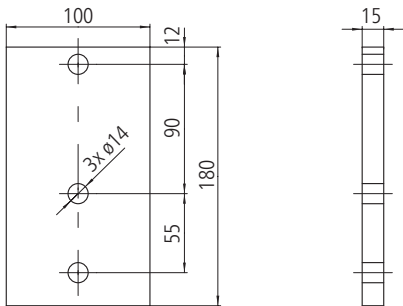
Wall mounting – brackets



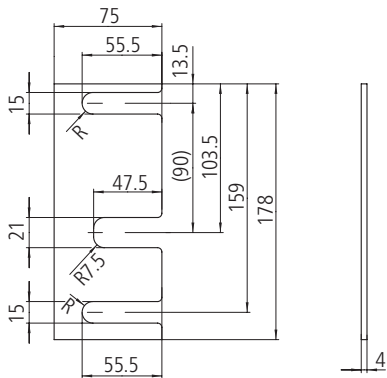
260 mm wall bracket



Baseplate (100 x 180 x 15 mm)



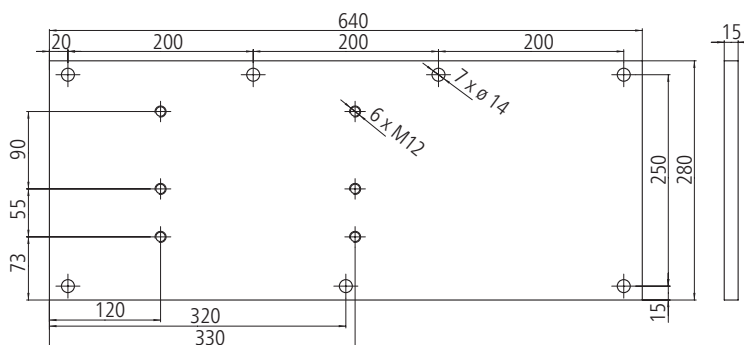
Baseplate, untreated (75 x 178 x 4 mm)



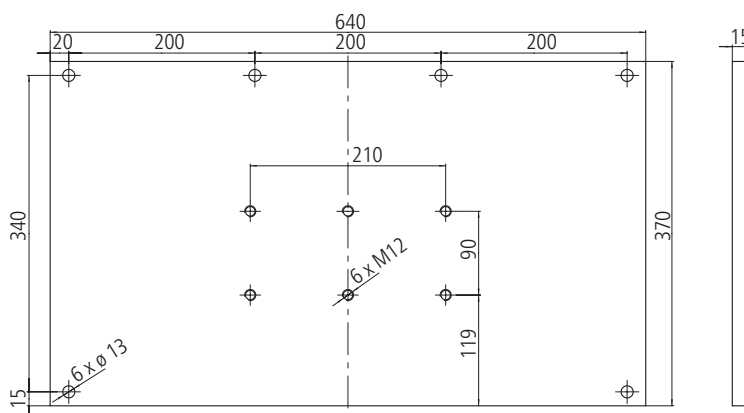
Wall mounting – mounting plates



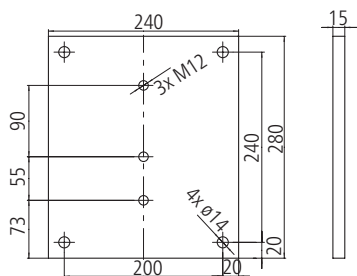
Mounting plate 640 x 280 x 15 mm



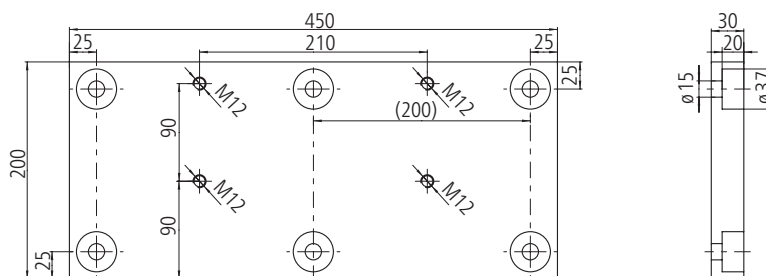
Mounting plate 640 x 370 x 15 mm



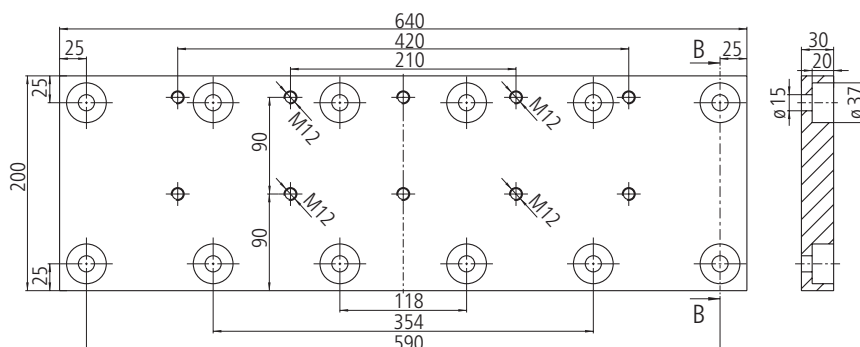
Mounting plate 240 x 280 x 15 mm



Mounting plate 450 x 200 x 30 mm



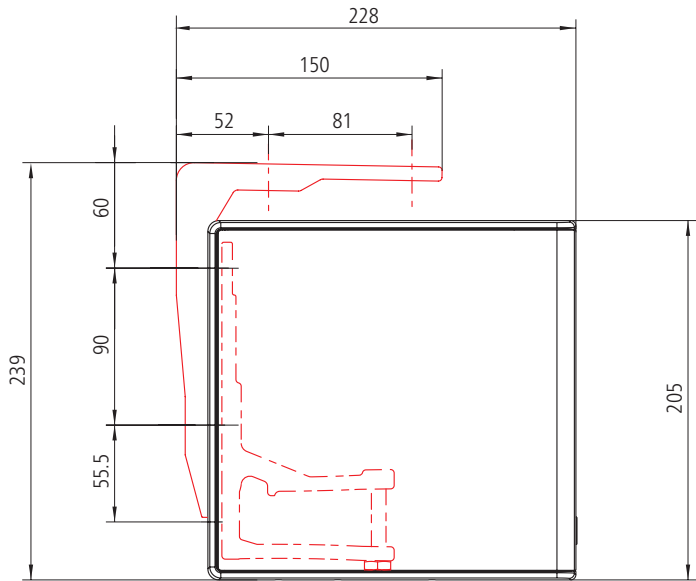
Mounting plate 640 x 200 x 30 mm



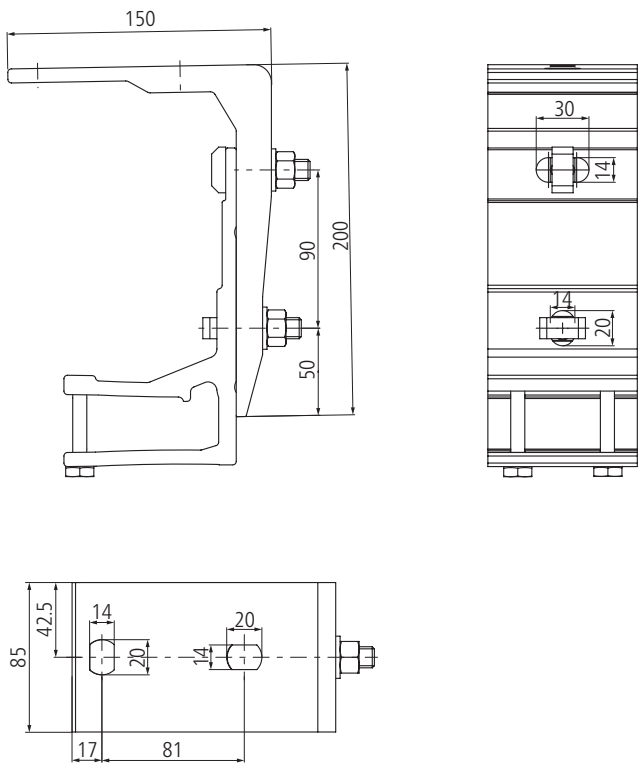
Ceiling mounting



Ceiling bracket



Ceiling bracket



01



Rafter bracket



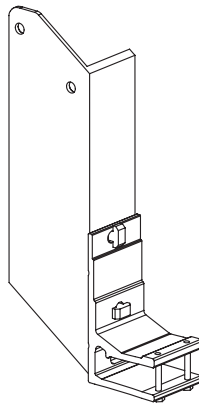
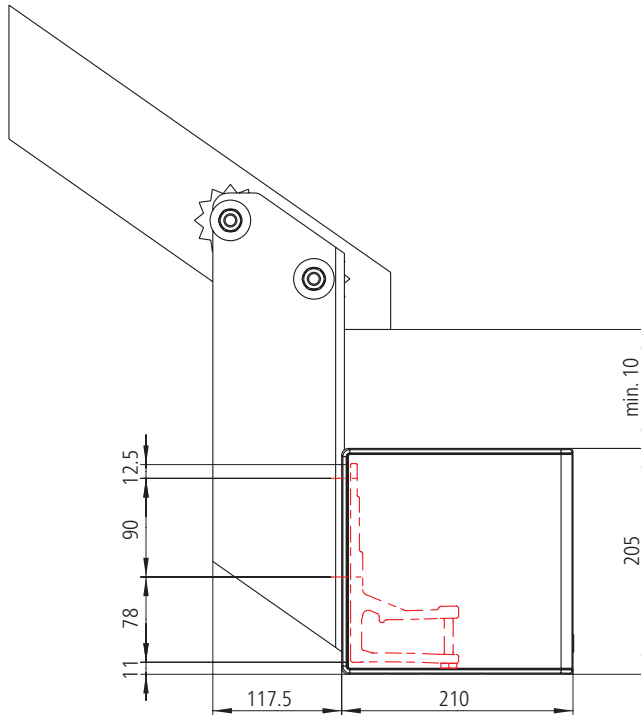
Rafter bracket without mounting plate
and wall bracket



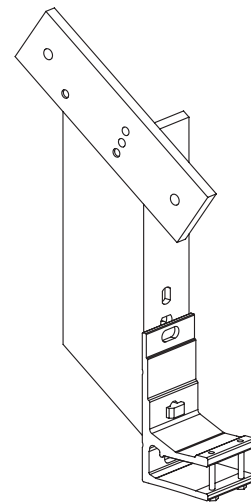
Rafter bracket (right)



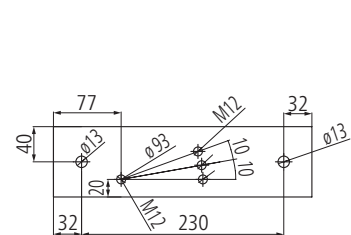
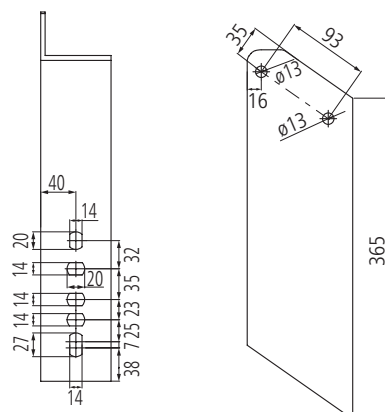
Mounting plate for
294 x 80 x 15 mm rafter bracket



Rafter bracket without mounting plate



Rafter bracket without mounting plate



Extraction forces

The extraction force is the force with which the weight of the awning and the wind load pull on each upper fixing. The tables indicate this force in N per upper fixing. It varies depending on the awning size and the wall bracket /mounting plate used.

Selecting the wall bracket and anchoring system:

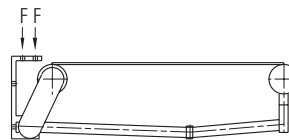
1. Consult relevant table for extraction force per fixing for selected awning size.
2. Select a wall bracket/mounting plate for which there is fixing material which can resist the indicated extraction force. Remember to take into account the spacing, the area which will be damaged if the fixing breaks out, the type of fixing material used and the mounting base.

See separate bracket overview for other bases.

Ceiling installation (on C20/25 concrete)

Extraction forces in N for ceiling mounting

Width in cm	Projection in cm					
	150	200	250	300	350	400
200	1086					
250	1292	1862				
300	1498	2159	2987			
350	1704	2456	3392	4518		
400	1910	2754	3796	5045	6362	
450	2126	3061	4211	5582	3528	4908
500	2332	3358	4615	6110	3861	5375
550	2538	3656	5020	3328	4194	5842
600	2744	3953	5424	3592	4527	6309
650	2950	4251	5829	3856	4860	6776



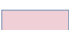





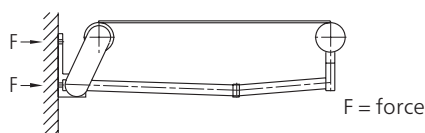
F = force

- 1 ceiling bracket including 1 85 mm wall bracket per arm or
 - 2 ceiling brackets including 2 85 mm wall brackets per arm
 - 1 ceiling bracket including 1 85 mm wall bracket as centre bracket, from 451 cm wide
- Number of fixings:
 without centre bracket: 4 or 8
 with centre bracket: 6 or 10

Extraction forces

Wall mounting on C20/25 concrete with up to 200 mm of facing
extraction force in N per upper fixing for wall bracket

-  1 85 mm wall bracket per arm or 2 85 mm wall bracket per arm; 1 85 mm wall bracket as centre bracket, from 451 cm wide
Number of fixings:
without centre bracket: 4 or 8
with centre bracket: 6 or 10
-  1 260 mm wall bracket per arm or 2 260 mm wall bracket per arm; 1 85 mm wall bracket as centre bracket, from 451 cm wide
Number of fixings:
without centre bracket: 8 or 16
with centre bracket: 10 or 18
-  1 240 x 280 x 15 mm mounting plate incl. 1 85 mm wall bracket per arm; 1 100 x 180 x 15 base plate for centre bracket including 1 85 mm wall bracket as centre bracket, from 451 cm wide
Number of fixings:
without centre bracket: 8
with centre bracket: 10
-  1 450 x 200 x 30 mm mounting plate including 2 85 mm wall brackets per arm; 2 100 x 180 x 15 base plates for centre bracket including 1 85 mm wall bracket as centre bracket, from 451 cm wide
Number of fixings:
without centre bracket: 12
with centre bracket: 14
-  1 640 x 280 x 15 mm mounting plate incl. 1 85 mm wall bracket per arm or 2 85 mm wall brackets per arm; 1 100 x 180 x 15 base plate for centre bracket including 1 85 mm wall bracket as centre bracket, from 451 cm wide
Number of fixings:
without centre bracket: 12
with centre bracket: 14
-  1 640 x 370 x 15 mm mounting plate incl. 1 85 mm wall bracket per arm or 2 85 mm wall brackets per arm; 1 100 x 180 x 15 base plate for centre bracket including 1 85 mm wall bracket as centre bracket, from 451 cm wide
Number of fixings:
without centre bracket: 12
with centre bracket: 14



Width in cm	Projection in cm					
	150	200	250	300	350	400
200	921					
	461					
	283					
	305					
	136					
	100					
250	1,101	1,617				
	550	808				
	338	495				
	365	533				
	162	238				
	119	175				
300	1,280	1,879	2,626			
	640	939	1313			
	393	575	803			
	424	619	863			
	189	276	385			
	139	203	283			
350	1459	2141	2983	3992		
	730	1070	1492	1996		
	448	655	912	1219		
	483	706	981	1309		
	215	315	438	585		
	158	231	322	430		
400	1639	2403	3341	4459	5622	
	819	1201	1671	2229	2811	
	503	735	1021	1361	1715	
	543	792	1098	1462	1841	
	241	353	490	653	823	
	177	260	360	480	605	
450	1818	2665	3699	4926	3106	4347
	909	1332	1850	2463	1553	2174
	558	816	1131	1504		
	602	878	1216	1616	2034	2844
	268	391	543	722	910	1273
	197	288	399	531	669	936
500	1998	2927	4057	5393	3401	4763
	999	1463	2029	2696	1700	2381
	613	896	1240	1646		
	661	965	1333	1769	2227	3116
	294	430	595	790	996	1394
	216	316	438	581	732	1025
550	2177	3189	4415	2930	3695	5178
	1089	1594	2208	1465	1848	2589
	668	976	1349			
	721	1051	1451	1922	2420	3388
	321	468	648	859	1082	1516
	236	344	476	631	796	1115
600	2357	3451	4773	3163	3990	5594
	1178	1725	2386	1582	1995	2797
	723	1056	1459			
	780	1137	1569	2075	2613	3660
	347	507	700	927	1169	1637
	255	373	515	682	859	1204
650	2536	3713	5131	3397	4285	6009
	1268	1856	2565	1698	2142	3005
	778	1136	1568			
	839	1224	1686	2228	2806	3931
	373	545	753	996	1255	1759
	275	401	553	732	923	1293

Extraction forces

Rafter mounting

Shear forces in N for rafter mounting

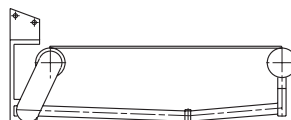
1 rafter including
1 85 mm wall bracket per arm or
2 rafter brackets including
2 85 mm wall brackets per arm,
1 rafter including
1 85 mm wall bracket as centre
bracket, from 451 cm wide, one
left and right version each
**Applies with two brackets per
arm on a rafter.**

1 rafter bracket including
1 85 mm wall bracket per arm or
2 rafter brackets including
2 85 mm wall brackets per arm,
1 rafter including
1 85 mm wall bracket as centre
bracket, from 451 cm wide one
left and right version each
**Applies with two brackets per
arm each on a separate rafter.**

1 rafter bracket with
Mounting plate including
1 85 mm wall bracket per arm or
2 rafter brackets with mounting
plate including 2 85 mm wall
brackets per arm
1 rafter with mounting plate
including 1 85 mm wall bracket
as centre bracket,
from 451 cm wide
one left and right version each
**Applies with two brackets per
arm on a rafter.**

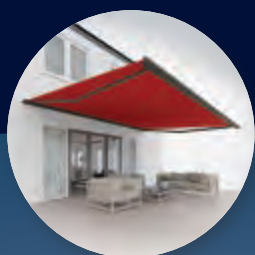
1 rafter bracket with
Mounting plate including
1 85 mm wall bracket per arm or
2 rafter brackets with mounting
plate including 2 85 mm wall
brackets per arm
1 rafter with mounting plate
including 1 85 mm wall bracket
as centre bracket,
from 451 cm wide
one left and right version each
**Applies with two brackets per
arm each on a separate rafter.**

Width in cm	Projection in cm					
	150	200	250	300	350	400
200	1523					
	1523					
	721					
	721					
250	1813	2598				
	1813	2598				
	853	1171				
	853	1171				
300	2102	3014	4153			
	2102	3014	4153			
	986	1355	1815			
	986	1355	1815			
350	2392	3430	4715	6257		
	2392	3430	4715	6257		
	1119	1539	2058	2682		
	1119	1539	2058	2682		
400	2682	3845	5278	6987	8776	
	2682	3845	5278	6987	8776	
	1252	1722	2302	2993	3716	
	1252	1722	2302	2993	3716	
450	2982	4271	5850	7727	9704	13495
	2982	4271	5850	7727	4862	6758
	1395	1916	2555	3314	4113	5646
	1395	1916	2555	3314	2067	2833
500	3271	4687	6413	8457	10622	14782
	3271	4687	6413	8457	5321	7401
	1527	2100	2798	3624	4500	6182
	1527	2100	2798	3624	2260	3101
550	3561	5102	6975	9187	11540	16068
	3561	5102	6975	4604	5781	8044
	1660	2283	3041	3935	4887	6717
	1660	2283	3041	1978	2454	3369
600	3851	5518	7537	9917	12459	17355
	3851	5518	7537	4969	6240	8688
	1793	2467	3284	4246	5274	7253
	1793	2467	3284	2133	2647	3637
650	4141	5933	8100	10647	13377	18641
	4141	5933	8100	5334	6699	9331
	1926	2651	3527	4556	5660	7789
	1926	2651	3527	2289	2841	3905





Premium quality
made in Germany



Awning



Awning
with Valance Plus
and Tempura



Awning
with Valance Plus
and Paravento



Pergola awning
Plaza Viva
and Paravento



Pergola awning
weinor PergoTex II
and Tempura



Pergola awning
weinor PergoTex II
with VertiTex II



Terrazza
patio roof
with Sottezza II
sun protection



Terrazza Pure patio roof
with lateral SUPER LITE
fixed glazing



Glasoase® with
conservatory awning
WGM Top and full glass
sliding door w17 easy

AWNINGS

PERGOLA AWNINGS

CUSTOMISED, SYSTEMISED SOLUTIONS

PATIO ROOFS AND GLASOASE®

